

Addressing Stormwater through the 303(d) Program

APPROACHES AND PLANS USED BY CT DEEP

A solid green horizontal bar at the bottom of the slide.

It's Just Stormwater.....

- Link Stormwater to Water Quality impacts
- Work within permit program approaches
- Integrate approach with 303(d) based plans



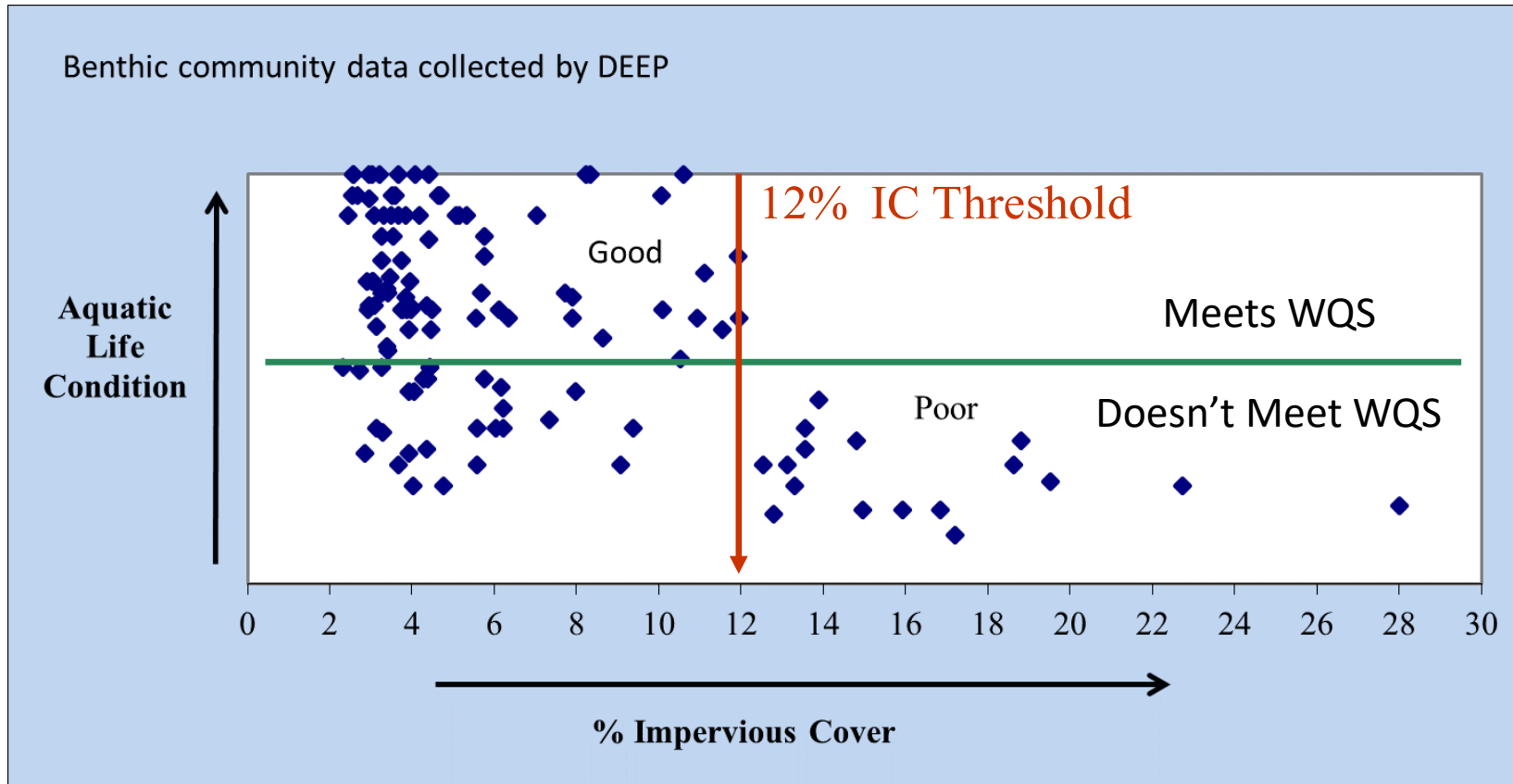
Water Quality Standards

Antidegradation Policy

Tier 2:

For new or increased discharges or activities resulting from stormwater the first inch of rainfall is not discharged to a surface water body and Best Management Practices deemed necessary to protect and maintain designated uses and meet state Standards and Criteria are implemented.

Impervious Cover & Aquatic Life Condition



Eagleville Brook TMDL

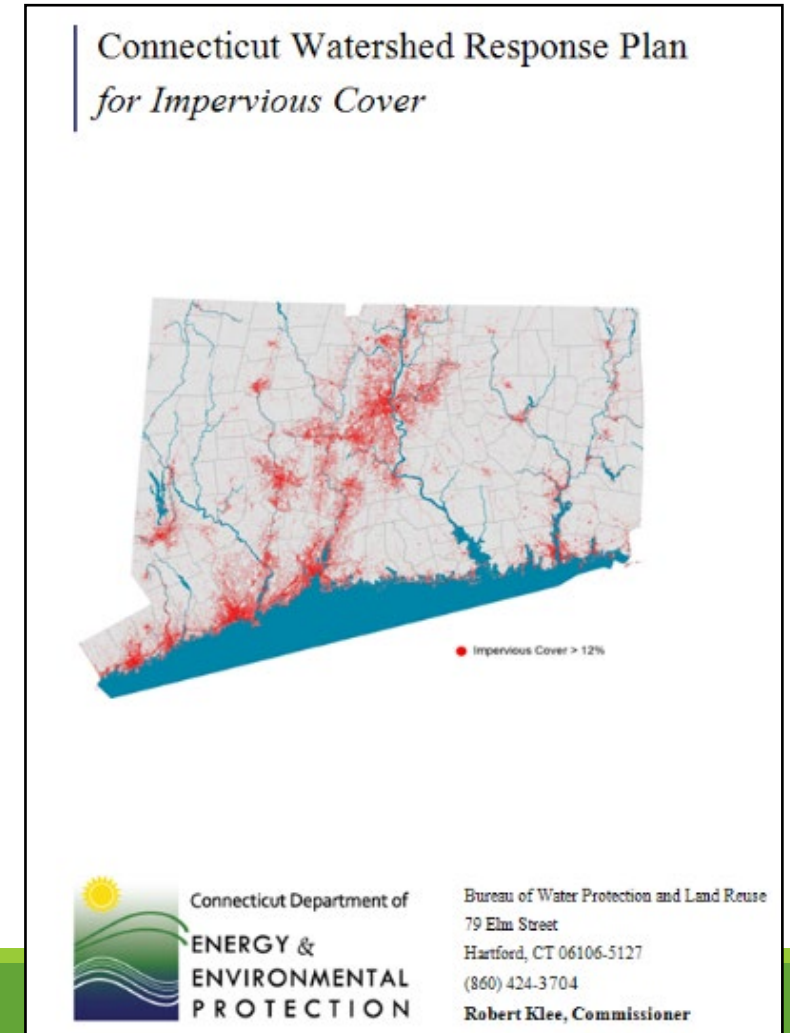


- TMDL focusing on storm water and water quality
- Uses Impervious Cover as a Surrogate
- Implementation Plan focuses on reducing the impact of IC on the environment
- 12% IC Threshold with 1% MOS
- 11% IC for both WLA & LA

NEMO Bioretention Cell Laurel Hall UCONN and Green Roof

Watershed Response Plan for IC

- Extends IC TMDL approach to other watersheds
- Core document
- Additional Resources for Implementation
- Documentation regarding IC as a surrogate TMDL target
- Responding to an Impervious Cover based TMDL
- Case Examples
- 15 Watershed Appendices



Integrated Report

Table 3-2: Summary of Designated Uses with Common Stressors

Impaired Use	Examples of Common Stressors	Examples of Common Sources	Potential Stressors Types		
			Chemical	Physical	Biological
Existing or Proposed Drinking Water	Bacteria	Stormwater, illicit discharges, agricultural runoff	x	x	x
Fish Consumption	Mercury, PCBs, Pesticides	Atmospheric deposition, industrial discharges, municipal wastewater treatment discharges hazardous waste sites, oil and chemical spills, land use, stormwater	x	x	
Marine and Freshwater Habitat for Fish, Other Aquatic Life and Wildlife	Habitat alterations, flow regime changes, Toxics, Nutrients, interactions between multiple pollutants, Low Dissolved Oxygen, other pollutants	Industrial discharges, municipal wastewater treatment discharges hazardous waste sites, oil and chemical spills, land use, stormwater	x	x	x
Recreation	Bacteria	Stormwater, illicit discharges, agricultural runoff	x	x	x
Shellfish Harvesting for Direct Consumption	Bacteria	Stormwater, illicit discharges, agricultural runoff		x	x
Commercial Shellfish Harvesting	Bacteria	Stormwater, illicit discharges, agricultural runoff		x	x

MS4 Permit Revision



303(d) Partnership with Permit Program

Presentations

Meet with
towns

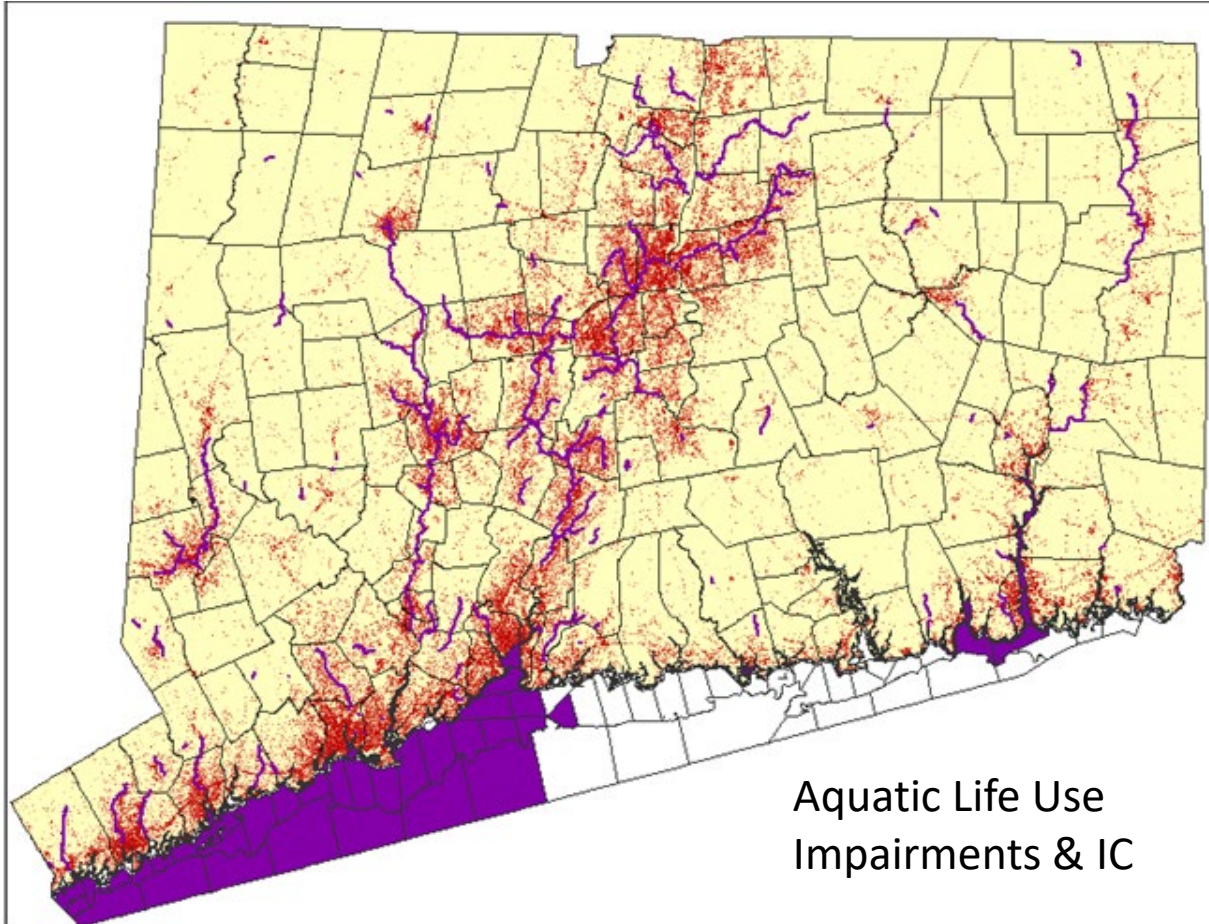
Website:
Stormwater &
WQ

Story Map:
Stormwater &
WQ

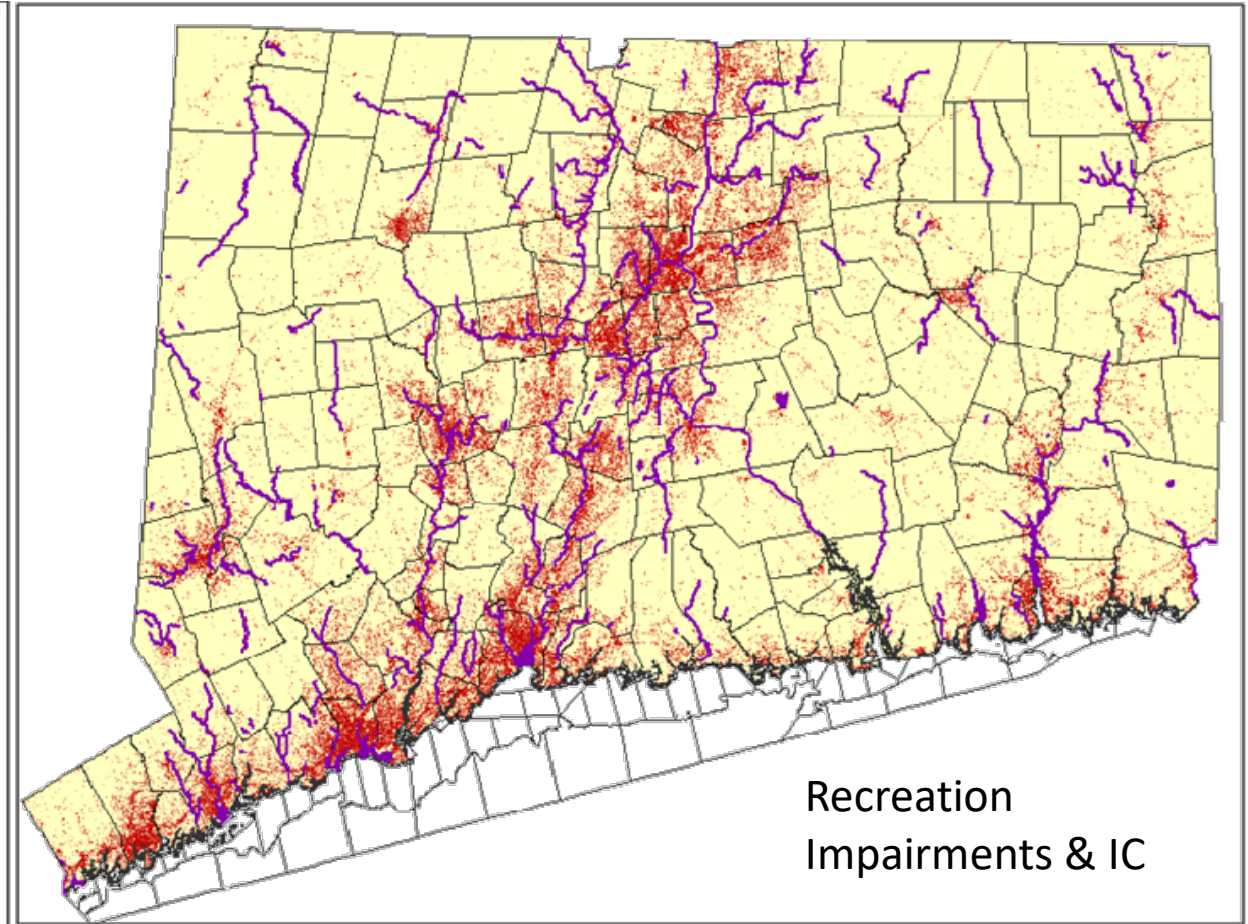
WQ Fact
sheets for all
towns in State

Third Party
Assistance

Relate IC to Impaired Waters



Aquatic Life Use
Impairments & IC



Recreation
Impairments & IC

169 Town Fact Sheets

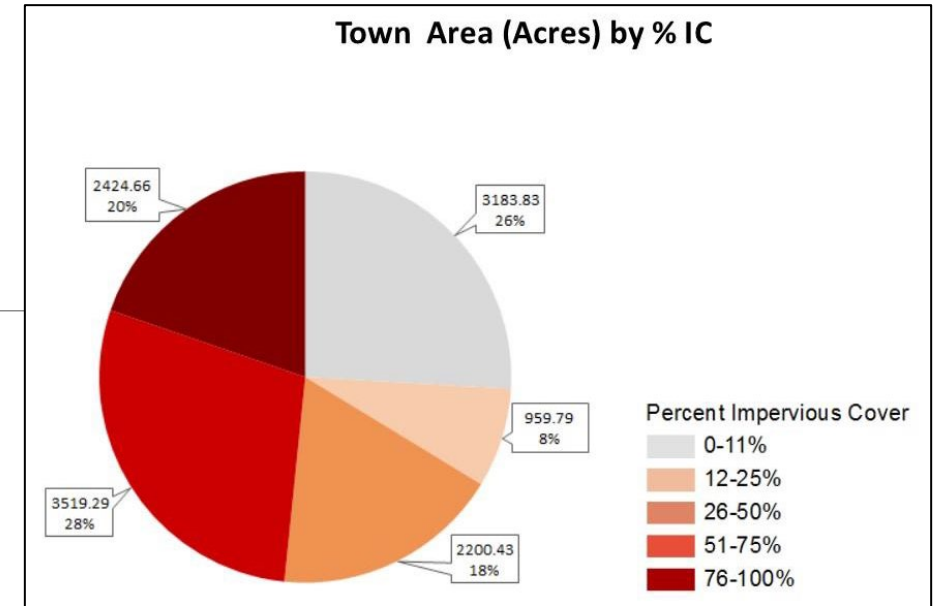
Written for general audience

Impervious Cover Data

Presentation & Interpretation of Stormwater Monitoring Data

Links to applicable TMDLs

Town maps with IC and waterbody assessment status



WQ based MS4 Permits

Best Management Practice Approach

- Baseline requirements applicable to all permittees
- Additional BMPs for waters (identified in table in permit)
 - With a TMDL
 - Included in a water quality restoration plan
 - Impaired without a TMDL
- Require Infiltration/Treatment of first inch of Stormwater
- Requires evaluation of %IC for each stormwater outfall
- Prioritizes IC disconnection in areas with >11% IC

Bacteria

Nitrogen

Phosphorus

Mercury

Current Actions

- Considering expansion of Watershed Response Plan
- Potential to change to TMDL
- Update town fact sheets and convert to online interactive web mapping application
- Establish or update TMDLs to provide more specific implementation recommendations in TMDLs
- Evaluating updating 90% storm information in the WQS based on new climate data
- Incorporate information on climate change and updated infiltration recommendations into TMDLs

Take Aways

Identify the relationship between Stormwater and Water Quality

Communicate early, often & across multiple venues

Get help for outreach

Keep the water quality and stormwater concerns visible

Develop tools across multiple CWA programs

Partner with permitting program

