

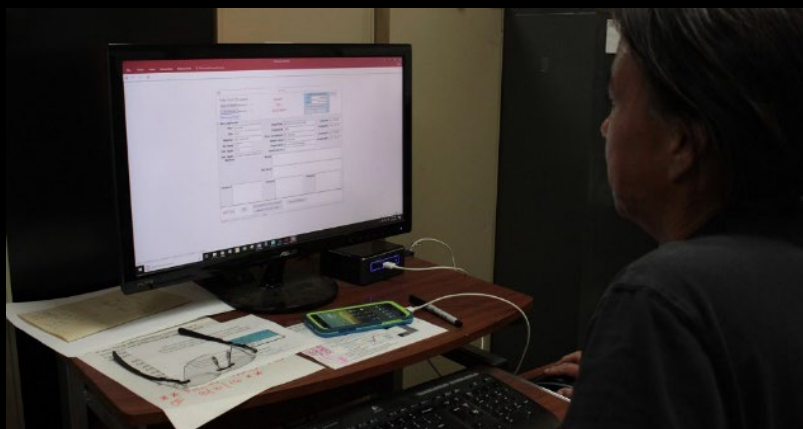
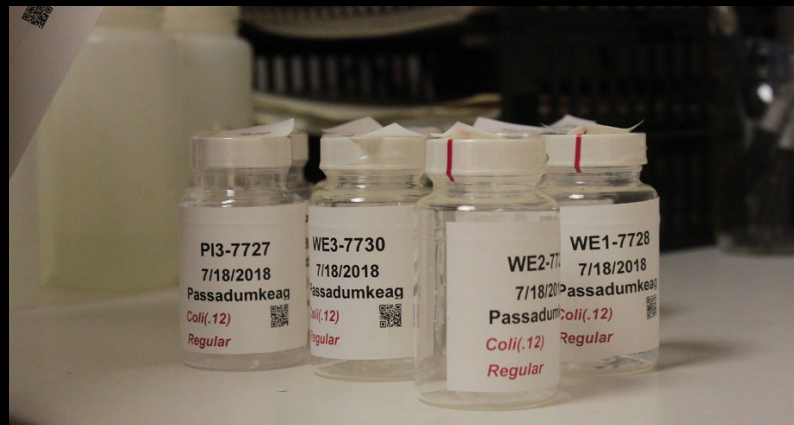
Using Data to Protect Traditional Lifeways







Using Data to
Protect Traditional Lifeways



Digital Data Entry – since 2006

Photo credit: Tyler Quiring

Somewhat
reluctantly



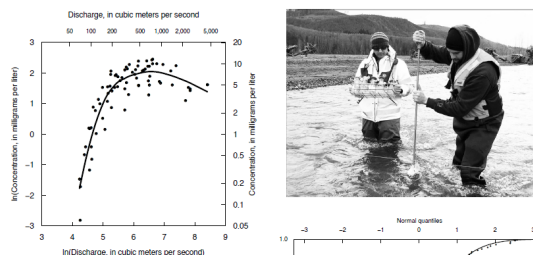
ArcGIS Survey123

Using R – since 2012 (Dennis Helsel)



Statistical Methods in Water Resources

Chapter 3 of
Section A, Statistical Analysis
Book 4, Hydrologic Analysis and Interpretation



Techniques and Methods 4–A3
Supersedes USGS Techniques of Water-Resources Investigations, book 4,
chapter A3

U.S. Department of the Interior
U.S. Geological Survey



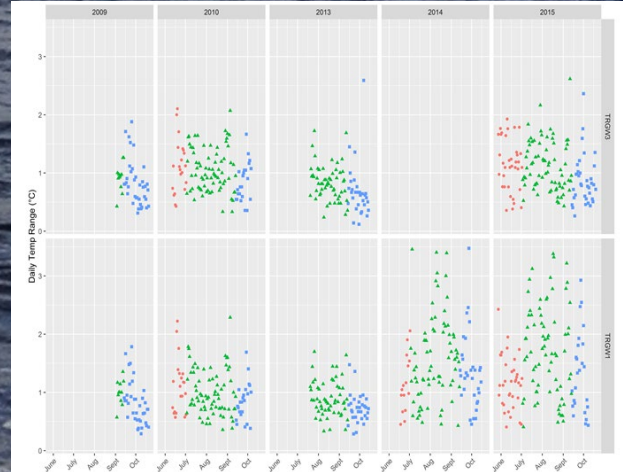
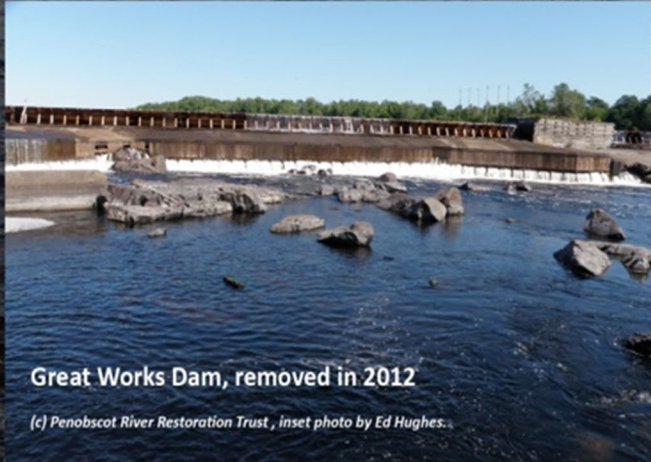
ggplot2:

Build a data
MASTERPIECE



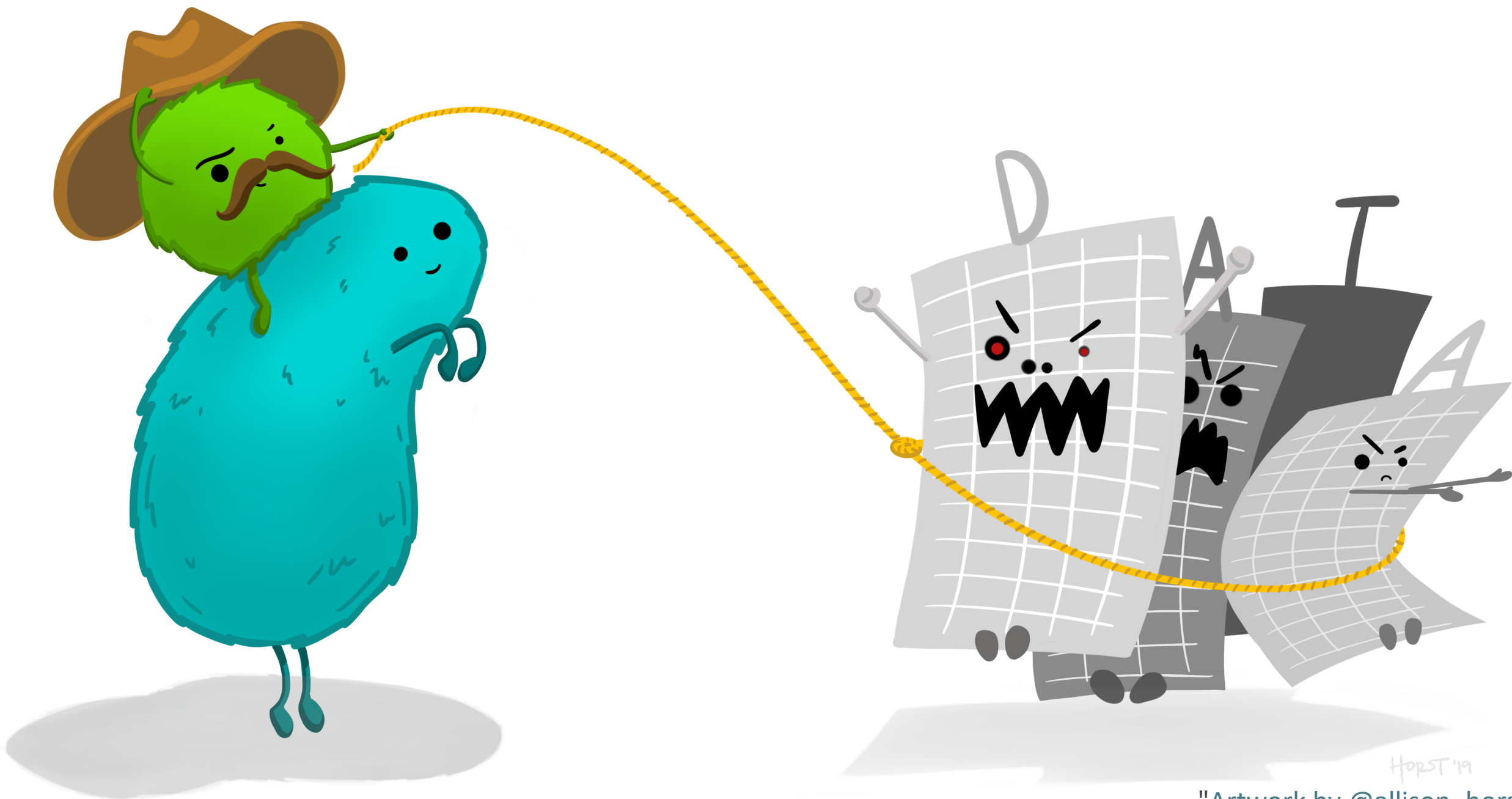
"Artwork by @allison_horst"

Restores Temperatures



dplyr : go wrangling





Horst '19

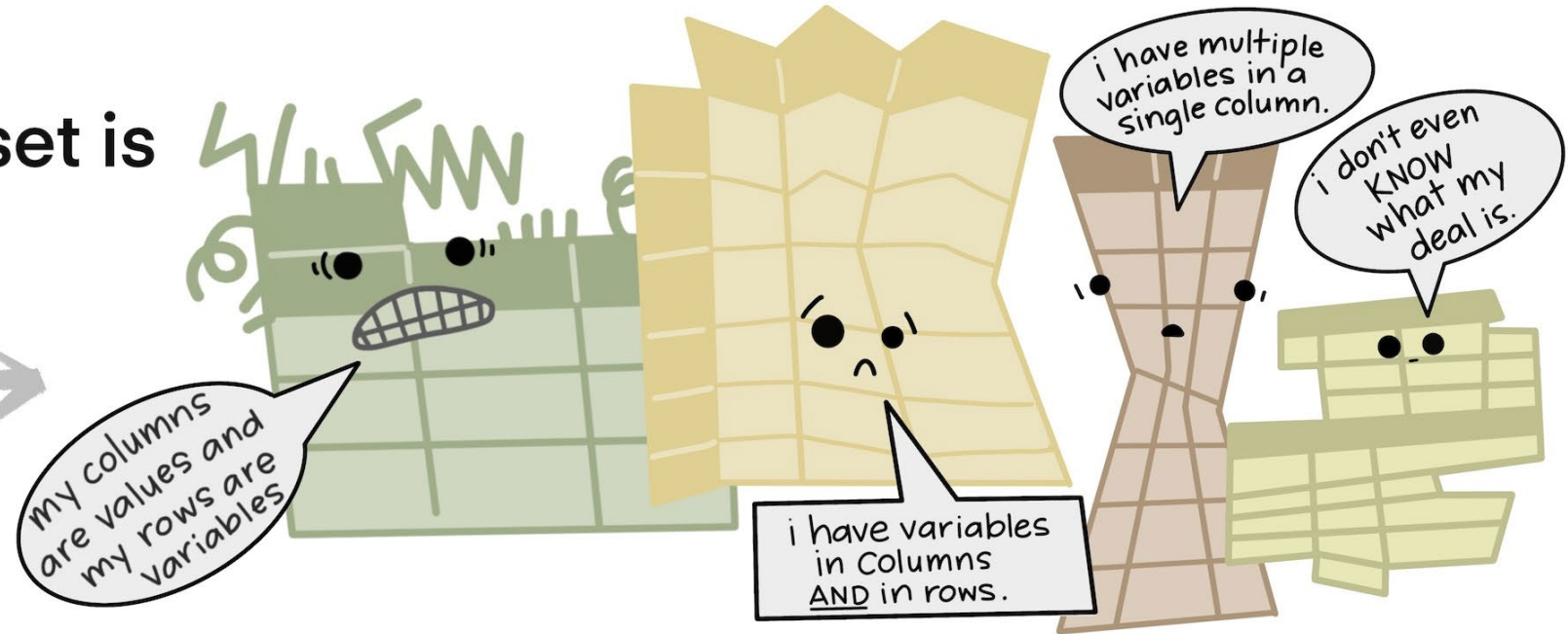
"Artwork by @allison_horst"



"Artwork by @allison_horst"

"...but every messy dataset is
messy in its own way."

—HADLEY WICKHAM



Rmarkdown

TEXT. CODE. OUTPUT.
(GET IT TOGETHER, PEOPLE.)

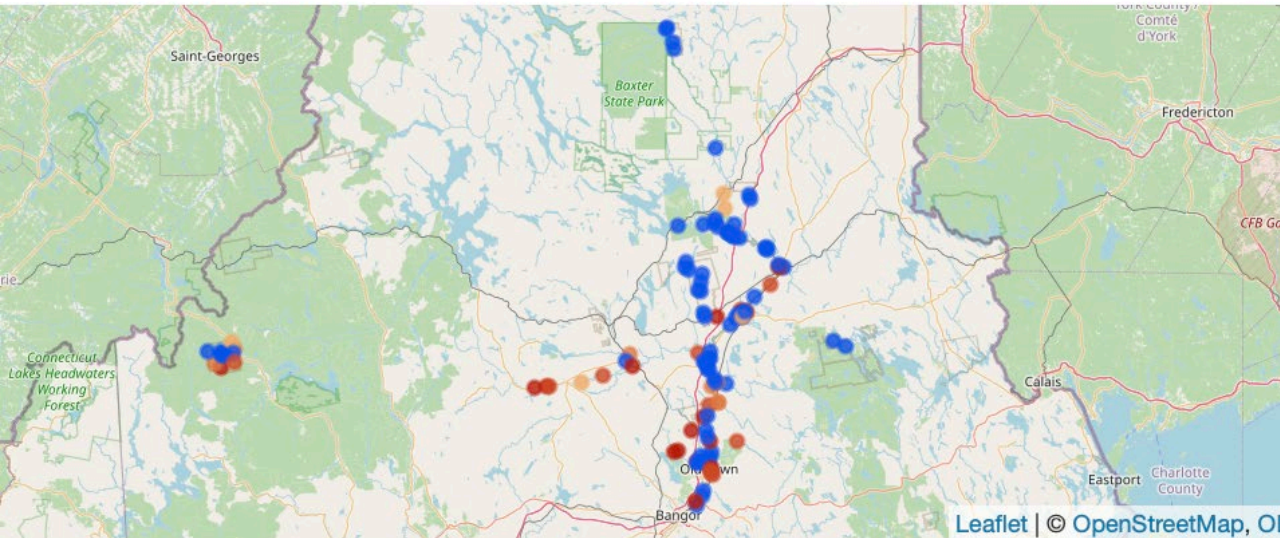


"Artwork by @allison_horst"

Water Quality Map

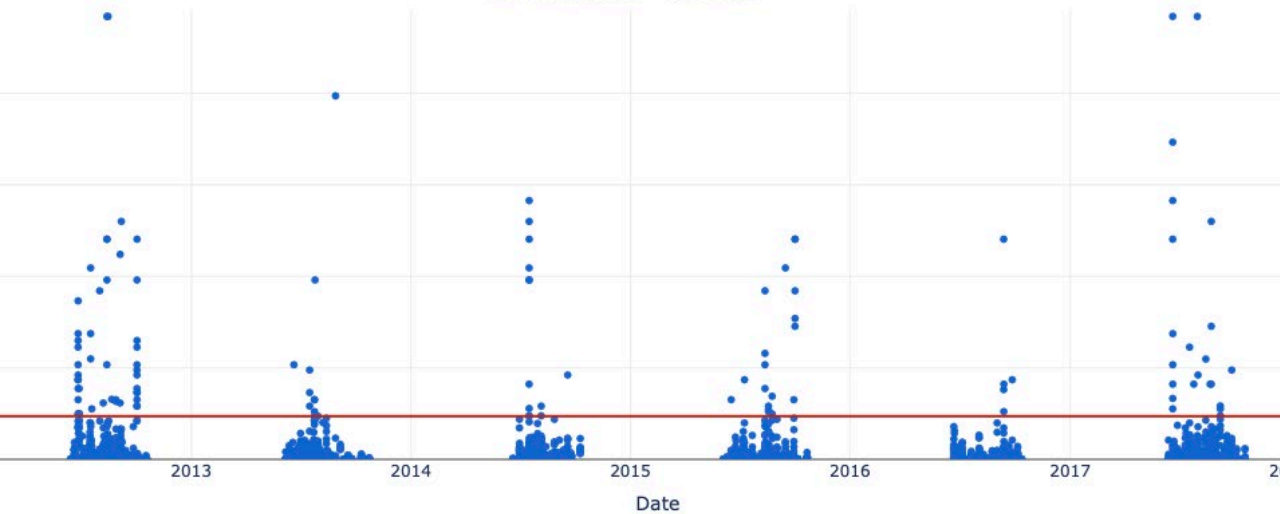
Welcome to the Water Quality Map! Check E. Coli levels in your local waterways.

Click on a marker to view a history of E.coli levels for that site.



and red markers indicate sites where at least one violation has been found. Markers are coloured based on highest n recorded.

E. coli Levels - All Sites



Shiny

Connections





01

TRAININGS & EVENTS

Tribal Data & Technology Academy workshops
Tribal Exchange Network Conference

02

TRIBAL ASSISTANCE

Developing skills & knowledge through peer-to-peer support.

03

COMMUNITIES OF PRACTICE

Creating spaces to share experiences and connect with other professionals

04

RESOURCES & ADVOCACY

Promoting tribal access, equity, & inclusion in the EN.



TXG SUPPORTS TRIBAL
MANAGEMENT, ANALYSIS,
AND SHARING OF
ENVIRONMENTAL DATA



FREE TRAININGS & EVENTS

(travel scholarships
available)



TRIBAL EXCHANGE NETWORK CONFERENCE

Networking and information sharing
opportunity on EN projects, grants, &
technology

TRIBAL DATA ACADEMY WORKSHOPS

- Excel
- Database Management
- Geospatial systems & mapping tools
- Basic coding (R and Python), data analysis,
and data science



COMMUNITIES OF PRACTICE

UPCOMING:

Monthly Data Drop-In Sessions, 10am Pacific/1pm Eastern

- Thursday, June 26
- Thursday, July 17
- Thursday, August 21
- Thursday, September 18
- Thursday, October 16

TRIBAL DATA DROP-IN SESSIONS

- LOTS of topics, many breakout rooms
- Demos, presentations, work along exercises
- Bring your own data-related question and get help!

OTHERS

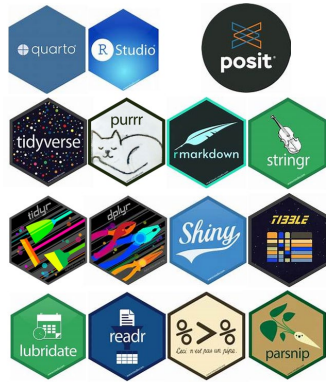
- **Pacific Northwest Tribal Coding Group**
- The Carpentries, R Consortium, ROpenSci, Openscapes collaborations
- GitHub repositories
- Tribal Carpentries Instructor Trainees
- Network of volunteers



FREE TRIBAL ASSISTANCE (TA)

One – on – One
Using your data
A product you need
At your pace





2025 UW- Summer Tribal Project with JST



Field Data Collection

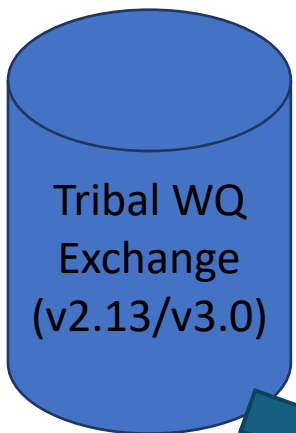
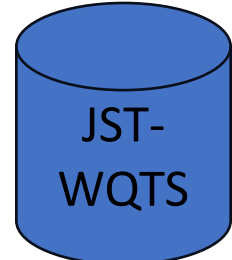
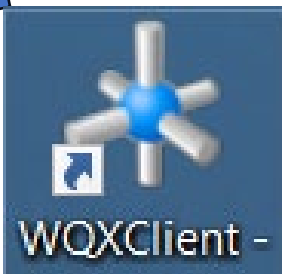


Field Data
Collection
datalogger



Discrete data

Time-series data



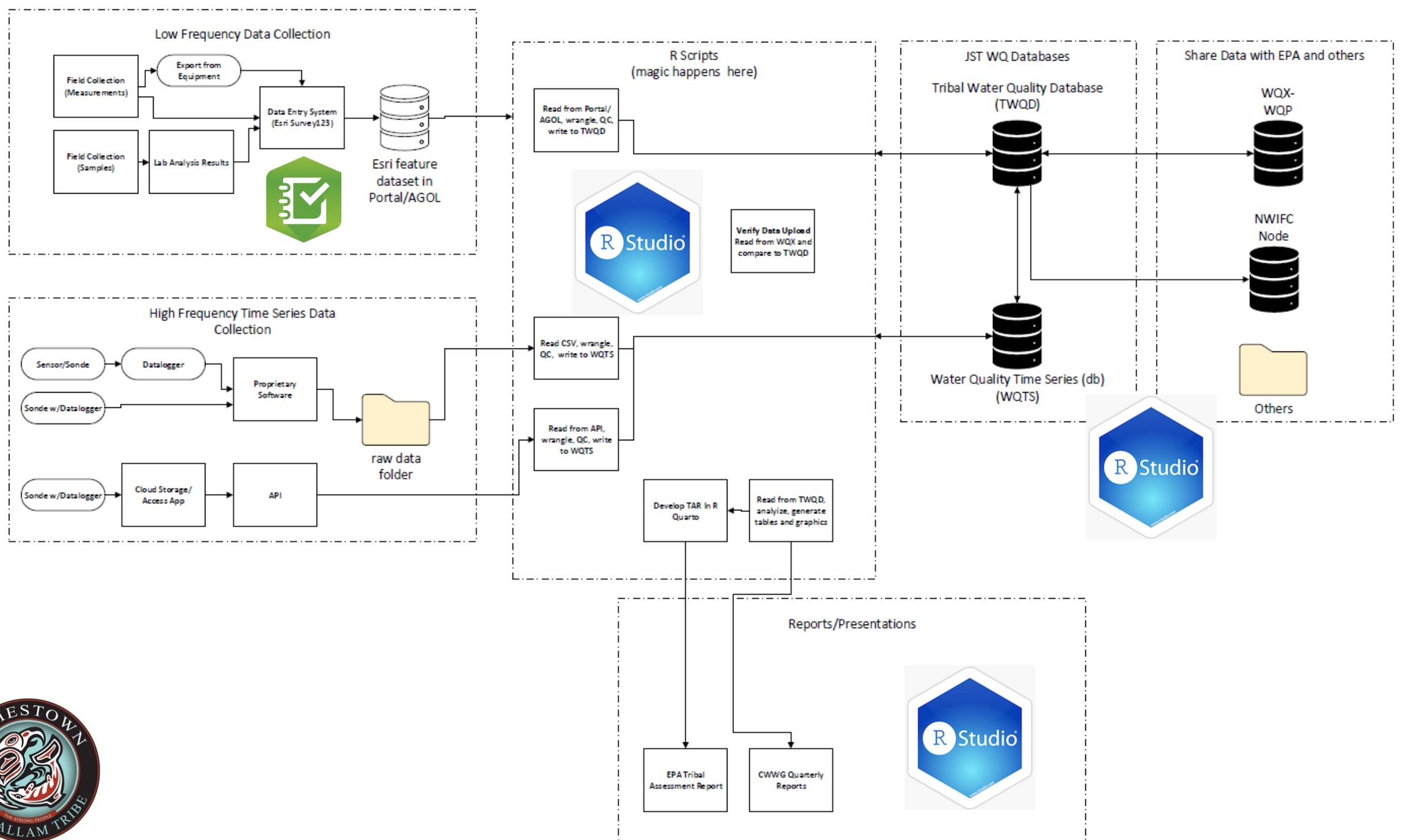
Exchange
Network
Products

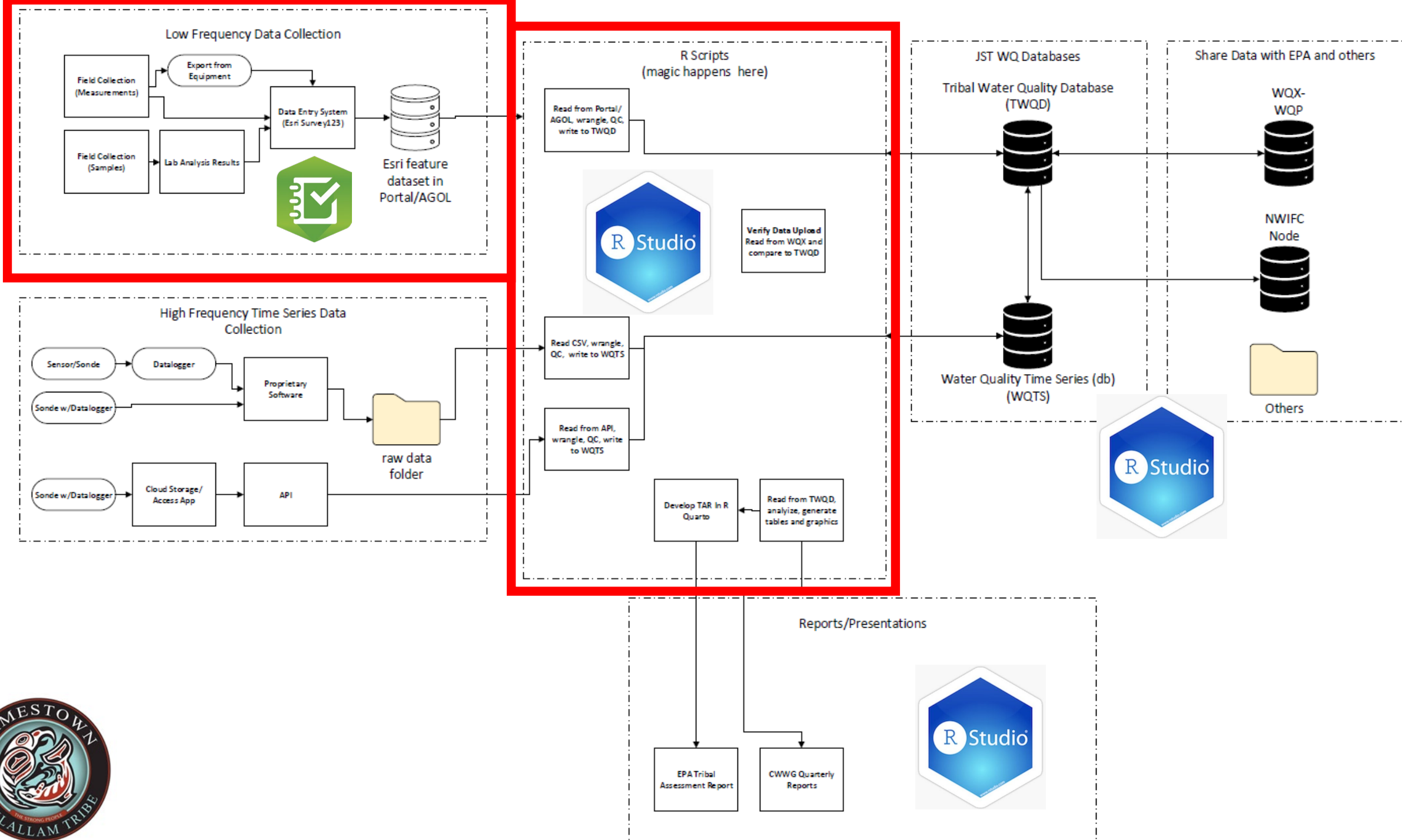
WQX
Database



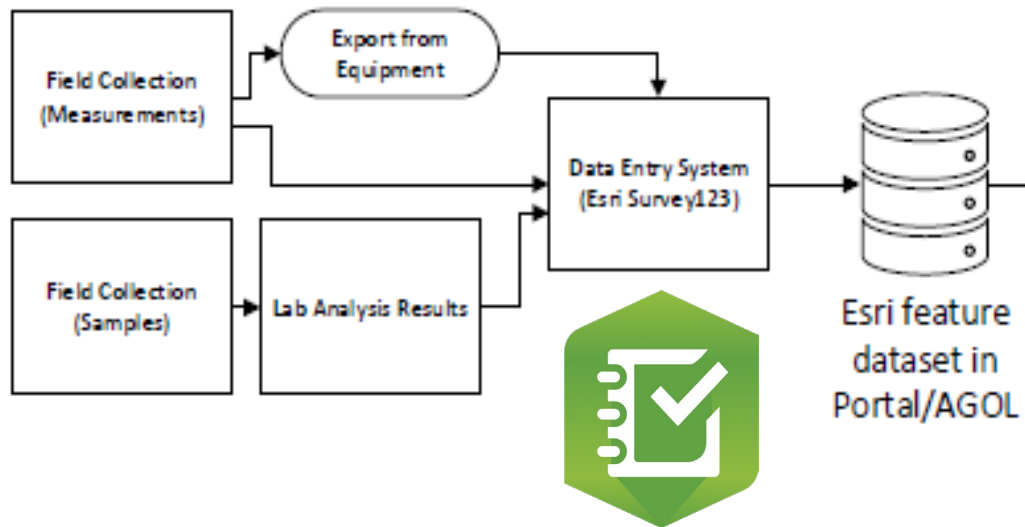
www.waterqualitydata.us
WQX, STORET, NWIS,
STEWARDSs...



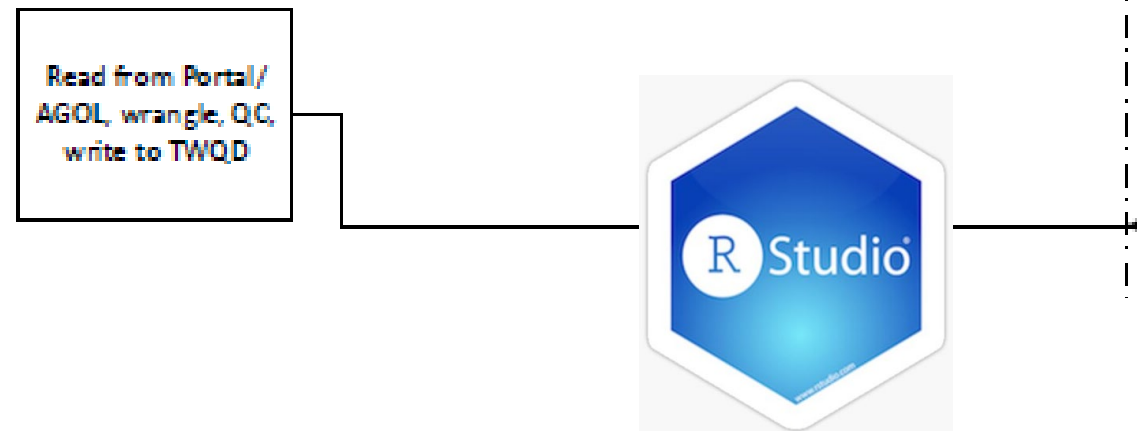




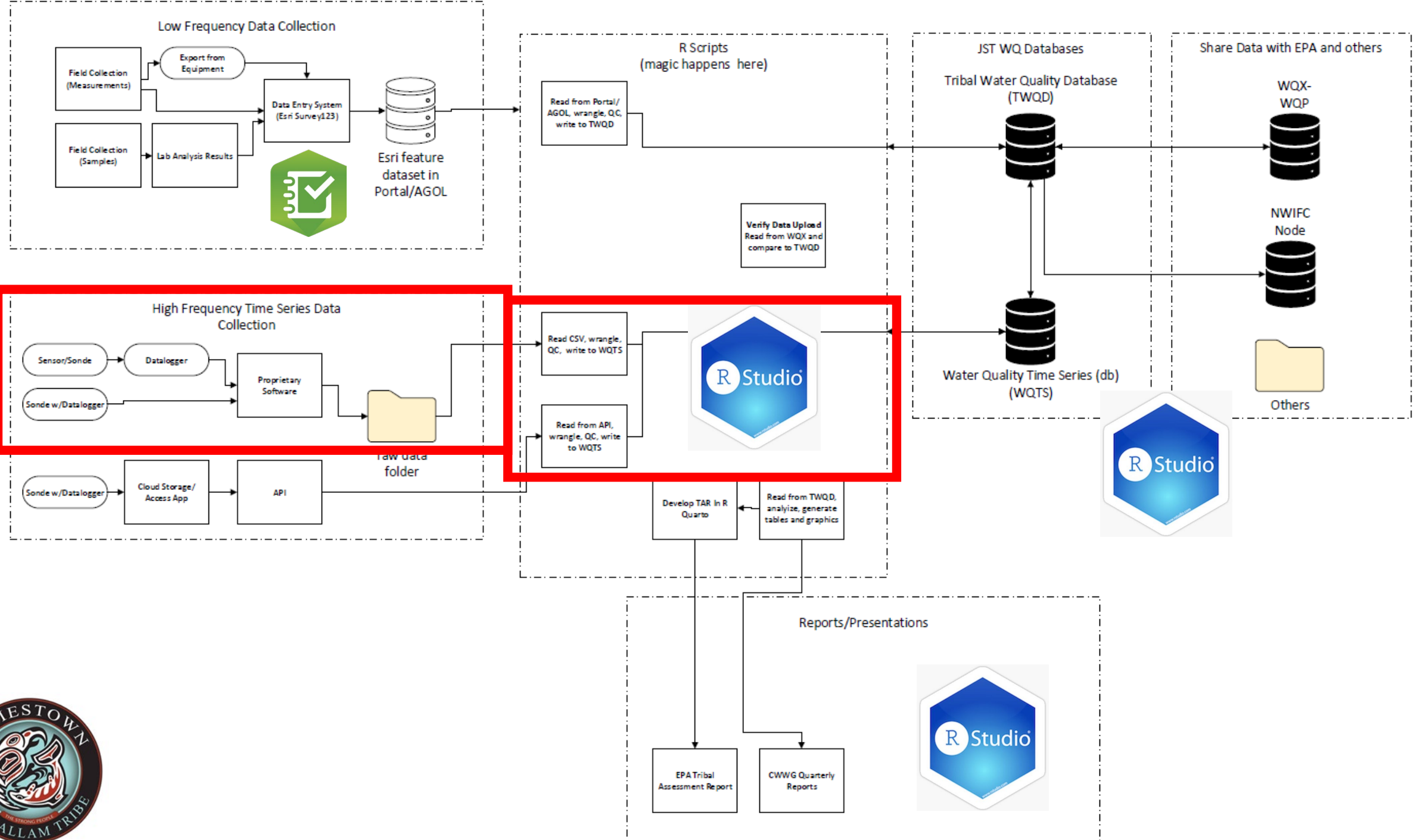
Low Frequency Data Collection

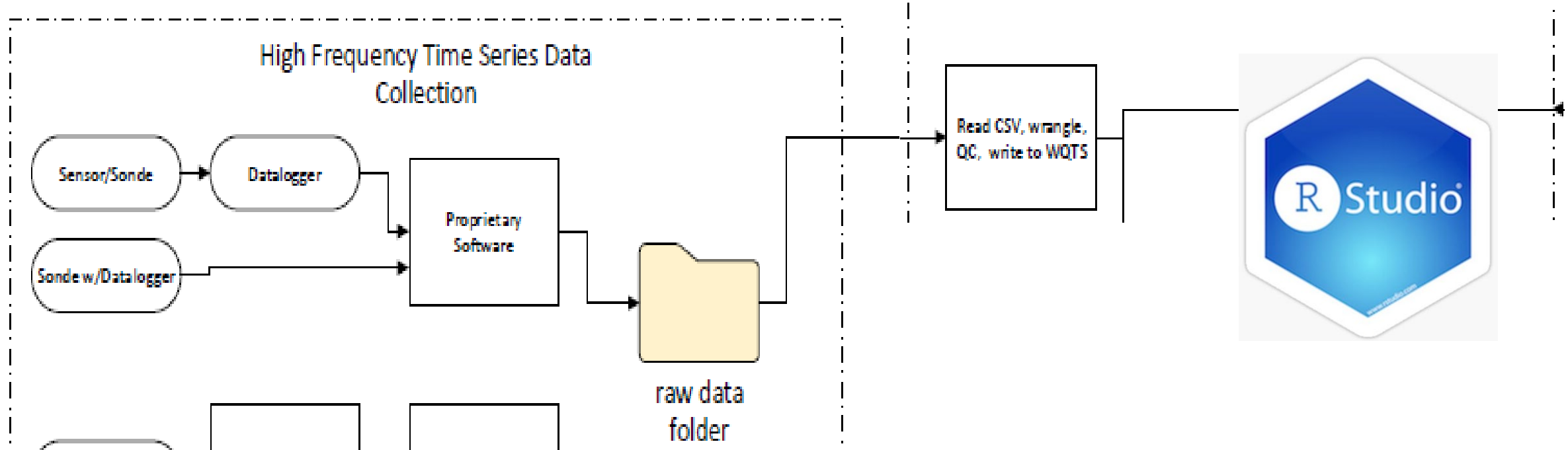


R Scripts (magic happens here)



Water Quality Portal – Tools for Automated Data Analysis (TADA)





ContDataQC Shiny App Workflow

The table below lays out the general workflow for using the ContDataQC app.

Action	Main Tab	Subtab(s) or Dropdown(s)
Organize sensor files	Data Preparation	Organizing Files
Name sensor files	Data Preparation	Naming Files
Format sensor files	Data Preparation	Formatting Files, Automated Reformatting
Evaluate QC test thresholds	Main Functions	QC Thresholds >> Evaluate Thresholds
Customize thresholds if necessary	Main Functions	QC Thresholds >> Edit Thresholds
Save and upload customized configuration file (if needed)	Main Functions	QC Thresholds >> Upload Custom Thresholds
Generate QC reports; review results; remove or correct data points as needed	Main Functions	Run Functions >> QC Raw Data
Combine QC'd data files from the same site/different time periods into a single file	Main Functions	Run Functions >> Aggregate QC'd data
Generate summary and visualization outputs	Main Functions	Run Functions >> Summary Statistics



Water Quality Portal – Tools for Automated Data Analysis (TADA)



RESOURCES & CONTACTS



txg@tribalexchangenetwork.org | tribalexchangenetwork.org

Angie Reed – TXG Vice Chair
Penobscot Nation
Water Resources Program
207.356.5167
angie.reed@penobscotnation.org



