

CURRENTS

Informing Decisions in a Changing World



ENVIRONMENTAL LAW INSTITUTE
2025 IMPACT REPORT

ANCHORED IN PURPOSE

Dear Friends,

This past year, powerful and unpredictable currents reshaped the environmental community.

Across the environmental landscape, long-standing assumptions are being tested. Legal frameworks shift rapidly. Institutional roles are evolving. These are not mere surface-level disruptions; they encompass deeper undercurrents reshaping the foundations of environmental law and governance.

We were not immune from these forces at ELL. Our team is smaller today than at the start of 2025. Long-planned restructuring was accelerated to keep up with the pace of change. For the first time in its long history, ELL faced intense pressure to alter our mission.

Yet, we remain moored in the core principles that have sustained us for decades: evidence-based decisionmaking is critical for people, the places we live, and our planet. The value of those principles has never been greater. The consequences of today's decisions will ripple for decades, shaping outcomes for communities, regional ecosystems, and global economies.

This is where our work is essential.

For over 50 years, ELL has provided support for the development and implementation of our community's interconnected laws, policies, and institutions. From energy systems and public health to water, oceans, and emerging technologies, we drive conversation and explore nuance, knowing that resulting actions and policies touch every aspect of our lives.

We are deeply grateful to our partners and supporters whose commitment ensures ELL remains a steady source of insight, integrity, and action in a time of institutional strain. Together, we are not only navigating this moment—we are shaping what comes next.

For people, places, and the planet,



COLLECTIVE IMPACT BY THE NUMBERS

506

experts featured across ELL webinars, podcasts, research reports, and publications

22,278

downloads of ELL research reports and publications

35,144

registrants for ELL webinars, workshops, conferences, and other events

201,352

total listens to ELL's People, Places, Planet podcast

CHANGING TIDES

REFLECTIONS FROM THE FIELD

INTERNATIONAL

Environmental Governance in a Shifting Global Order

Beyond recent changes in the United States, broader long-term shifts are reshaping the global context for climate and environmental action, including evolving international agreements and rapid technological change.

ELI has engaged a wide range of experts and practitioners to take stock of evolving geopolitical, economic, environmental, technological, and social dynamics. Building on this assessment, ELI is convening collaborative discussions to identify pathways for advancing policy and practice in this changing global landscape.

This work reflects the increasing interconnectedness of environmental challenges, where decisions in one region can shape outcomes far beyond its borders. It also highlights the need for new models and coalitions of the willing to carry forward those models, even in the absence of consensus. These models need to be able to adapt to rapid change and complexity. Through this engagement, ELI is translating complex global trends into actionable policy insights.



EXPERT STAFF

Carl Bruch

LOCAL

On the Frontlines: Community-Led Resilience

With the drastic pullback on the scope of federal Clean Water Act protections, long-standing safeguards for the nation's waters and wetlands are eroding. In the wake of these changes, local governments are increasingly exercising their land use authorities to protect their valuable resources.

There is growing recognition that wetland protection extends beyond habitat conservation; wetlands are vital community infrastructure, providing benefits tied to public safety and livelihoods, including flood control, groundwater recharge, and water quality. Like all infrastructure, sustained investment delivers benefits for current and future generations, while neglect can lead to costly failures, degraded ecosystems, and increased flood risks.

To address emerging challenges, communities are increasingly turning to "natural infrastructure" or "nature-based strategies," such as wetland restoration, for flood resilience and sea-level rise protection. ELI works with localities and nonprofit partners to promote proactive policies that preserve wetland function and help make communities more resilient.



EXPERT STAFF

Rebecca L. Kihslinger

EMPOWERING DECISIONMAKERS

WATER & OCEANS

Integrating Technology in Fisheries Management

Countries in the Caribbean region are experiencing significant challenges related to the governance of marine resources. These challenges include illegal, unreported, and unregulated (IUU) fishing; overfishing; climate change; pollution; limited capacity and resources; and data issues.

Through collaborative engagement, research, development of guidance materials, and peer-to-peer learning, ELI is working with governmental representatives, local and regional organizations, fisher organizations, and others to help Caribbean countries safeguard the sustainable use of their fisheries. In 2025, ELI focused its efforts on supporting countries' incorporation of newly available technologies and ways to effectively address technology in legislation to improve fisheries management.



EXPERT STAFF

Sofia O'Connor

INTERNATIONAL

Protecting the Rights of Environmental Defenders

Environmental defenders stand at the frontlines of protecting our planet, safeguarding natural resources and advancing human rights—often at great personal risk. Since 2012, more than 2,100 environmental defenders have been killed. However, few cases are ever prosecuted. ELI is collaborating with partners in Brazil, Colombia, and Mexico to track these investigations and prosecutions in an effort to curb impunity.

By building robust quantitative and qualitative evidence, ELI empowers governments, civil society, and international institutions to improve accountability, advance protection measures, and safeguard those defending our environment. This initiative is supported by the Swedish Postcode Foundation and engages regional experts, UN bodies, and human rights organizations.



EXPERT STAFF

Kristine Perry

PEOPLE, PLACES, PLANET PODCAST
*Land Rights, Impunity, and the Fight to Protect
Brazil's Environmental and Land Defenders*



CLIMATE & ENERGY

Building Judicial Capacity Through Climate Science Education

With more than 2,000 cases filed in the U.S. courts where climate law, policy, or science plays a central role, judges—who are often generalists—need tools to understand the scientific and technical evidence that may come before them. ELI’s Climate Judiciary Project (CJP) helps meet this need by providing evidence-based judicial education on climate science and how it arises in the law.

“ This program prepared me to be a thoughtful and informed jurist. I feel confident that I can fairly, impartially, and intelligently approach this complicated subject matter when it presents in my courtroom. -A participant judge

CJP partners with leading judicial education institutions on events that bring scientific and legal scholars together to teach judges about climate science, impacts, and solutions and how they are arising in the law. The project also maintains a written self-study curriculum available online to anyone.

Similar to judicial education that occurs on a wide variety of scientific and technical topics, this type of education serves the public interest and strengthens the rule of law by helping to ensure that judges have the knowledge that they need to make independent, objective, and fair decisions.

EXPERT STAFF

Helene T. Krasnoff



John M. Doherty



HEALTHY COMMUNITIES

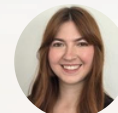
Powering Equitable and Sustainable AI Infrastructure

Communities across the country are working to balance environmental protection, public health, and economic opportunity. As AI systems and large-scale data centers place unprecedented demands on local infrastructure, water resources, and energy systems, local leaders need better tools to make informed decisions. The Digital Economy & the Environment Program (DEEP), an ELI initiative, equips decisionmakers to meet these challenges.

Last year, ELI hosted researchers, policymakers, and civil society representatives for a workshop to examine how these pressures affect community health and resilience. Participants explored issues such as the public health impacts of on-site diesel generators and the lack of transparency around cooling water quality. This work demonstrates ELI’s unique ability to convene diverse stakeholders, generate actionable insights, and support policies that protect healthy communities.

EXPERT STAFF

Alexandria Nelson



WATER & OCEANS

Safeguarding U.S. Waters for the Long Term

Identifying and restoring polluted waters presents persistent scientific, technical, and programmatic challenges. In this dynamic context, effective policy depends on strong communication and integration across jurisdictions.

Since 2008, ELI has annually brought together water quality leaders from all 50 states, dozens of tribes, all 5 U.S. territories, D.C., and EPA. These workshops have provided a rare national forum for candid discussion of challenges and emerging needs, as well as an opportunity for collaborative problem solving and innovation.

By creating and maintaining this lasting forum of dialogue and expertise, ELI helps decisionmakers navigate water quality challenges, strengthen program strategies, and safeguard U.S. waters for the long term.

EXPERT STAFF

Adam Schempp



STRENGTHENING

IMPLEMENTATION ACROSS JURISDICTIONS



WATER & OCEANS

Harnessing State Power in Offshore Wind Development

The Coastal Zone Management Act (CZMA) is a key federal statute that empowers state coastal management programs to influence federal activities, such as offshore wind leasing and permitting. ELI works directly with states to strengthen cooperative federalism and build states' capacities to meaningfully participate in planning processes.

By translating complex regulatory regimes into actionable knowledge and recommendations, ELI helps states advance their priorities, align projects with local needs, and implement environmental and energy policies. These efforts enhance state and local voices in sustainable energy decisionmaking and protect coastal communities and ecosystems.



EXPERT STAFF

Adam Schempp



Amy Reed

HEALTHY COMMUNITIES

Improving Indoor Air Quality for Public Health

Americans spend nearly 90% of their time indoors, making indoor air quality (IAQ) a critical determinant of public health. ELI convenes state and local officials across jurisdictions to share tools and advance healthier air in the buildings where we live, work, and learn.

In 2025, ELI held its 18th “Workshop for Indoor Air Quality Officials,” focused on peer learning across state and local governments and addressing IAQ comprehensively. ELI also worked with the Brown School of Public Health, the International WELL Building Institute, the U.S. Green Building Council, and others to develop a guide for state leaders to improve IAQ.

Building on this work, ELI continues to advance practical strategies to improve IAQ across building types and jurisdictions. By connecting officials with peers and technical experts, ELI helps translate shared challenges into actionable solutions that can be adapted and implemented nationwide.

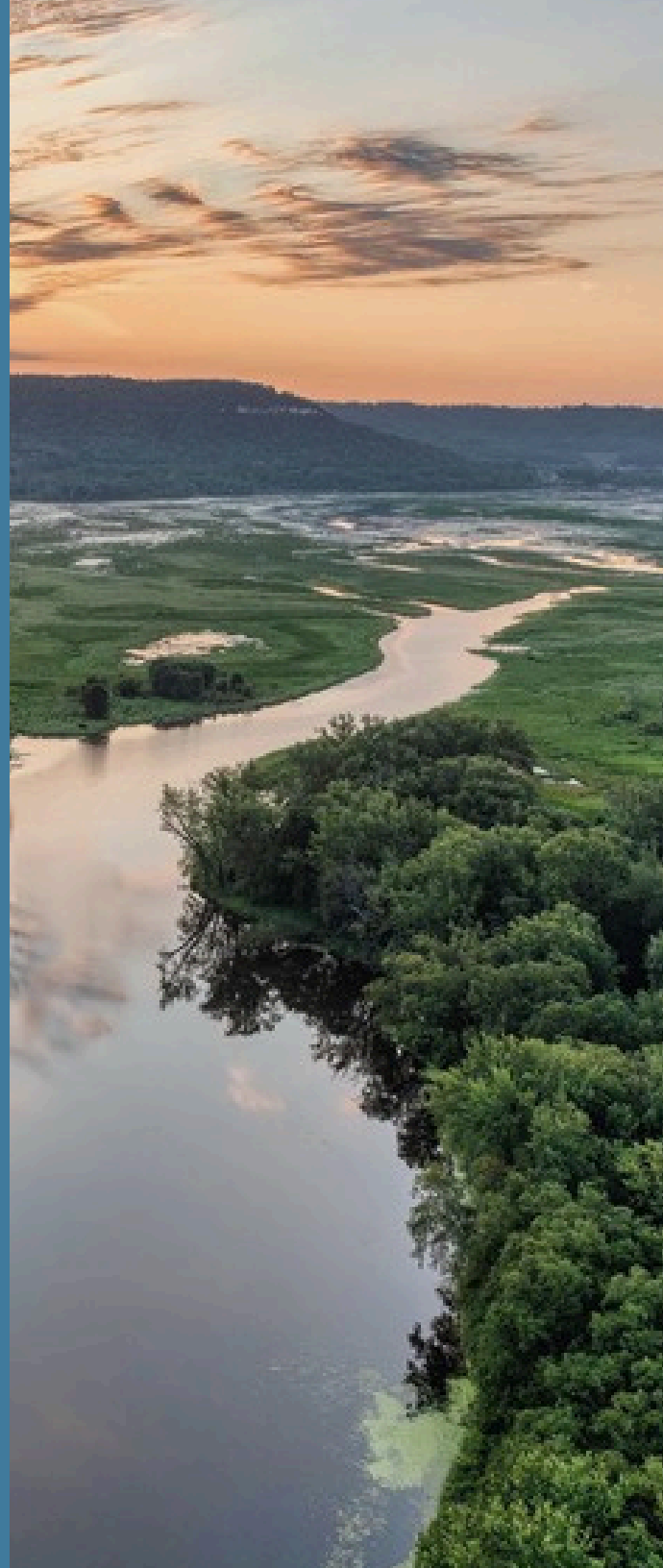


EXPERT STAFF

Amy Reed



ELI RESEARCH REPORT
Clean Indoor Air: A Guide for State Leaders to Improve Indoor Air Quality



INTERNATIONAL

Reinforcing Compliance and Enforcement Through Technology

AI is transforming how environmental laws are monitored, enforced, and complied with. For example, AI is being used to analyze data from satellite and drone footage, digital sensors, and even citizen-generated reports, all highlighted in our recent “Advanced Water Pollution Monitoring” webinar.

As Secretariat for the International Network for Environmental Compliance and Enforcement (INECE), ELI is taking stock of approaches from around the world in how AI can effectively and responsibly strengthen compliance and enforcement in a range of environmental and natural resource contexts. ELI is also convening leading experts in environmental law, technology law, and AI to examine these questions, including through a co-sponsored 2025 conference at Georgetown Law. This body of work is graciously supported by the Wasserman-Slotkin Family Charitable Giving Fund.



EXPERT STAFF

Susannah Dibble

CLIMATE & ENERGY

Leading Local Action on Food Waste

Food waste is a systemic driver of climate change, responsible for an estimated 8-10% of global greenhouse gas emissions. It strains waste systems and exacerbates food insecurity. Local governments are uniquely positioned to act by preventing waste, rescuing surplus food, and recycling scraps.

To build capacities of state and local governments and help fill a needed gap in under-resourced jurisdictions, ELI provides toolkits as well as model ordinances, laws, and executive orders based on best practices research that can be tailored to specific local contexts. The city of Albuquerque recently advanced community composting based on an ELI model ordinance developed with NRDC.

ELI works with NRDC and Urban Green Lab on the Nashville Food Waste Initiative, where its research, convenings, and publications inform strategies nationwide and demonstrate how local innovation can scale.



EXPERT STAFF

Linda K. Breggin



ELI PUBLIC WEBINAR
Creating a Glide Path for Municipal Action: An Overview of Model Ordinances and Executive Orders on Food Waste Reduction

INFORMING

THE FUTURE OF ENVIRONMENTAL LAW

CLIMATE & ENERGY

Rebuilding the Foundations of Environmental Governance

At the federal level, environmental challenges have been addressed by foundational statutes like the National Environmental Policy Act (NEPA), which has helped guide federal decisionmaking for over five decades, and the Clean Air Act, which directly regulates air pollution. While the drafters of these laws saw them as capacious and forward-looking, recent judicial opinions and executive actions have limited their applicability to multifaceted challenges like the climate crisis.

ELI is contributing to a national conversation on the consequences of these decisions and potential paths forward. Our webinars and reports offer evidence-based analysis and commentary that illustrate how legal frameworks influence environmental decisionmaking in practice. ELI experts have tracked agency and court decisions, educated the public on the basis for the endangerment finding, and briefed congressional staff on NEPA and federal permitting, injecting real-world data into the discussion. And we have partnered with the Federation of American Scientists in an effort to reform and update environmental law to meet modern challenges while continuing to protect public health and ecosystems.

By identifying emerging legal issues, convening experts, and providing stakeholders with deeply informed analyses, ELI helps shape the trajectory of environmental law in a rapidly evolving regulatory landscape.



EXPERT STAFF

Jay Austin



Jarryd Page



ENVIRONMENTAL LAW REPORTER
Annual Supreme Court Review & Preview

HEALTHY COMMUNITIES

Tracking Emerging Toxics Litigation

In recent years, detection of risk associated with forever chemicals, pesticides, and other consumer and industrial products has substantially advanced, and public awareness has grown correspondingly. At the same time, regulatory frameworks have not fully kept pace, creating uneven standards and new liability risks.

To better understand the evolving legal landscape, ELI has published “Current Trends in Toxics Litigation” in preparation for the launch of a new toxics litigation database. ELI’s litigation tracker serves as a critical tool to protect public health and as a mechanism for addressing alleged harm from exposure to toxic substances, underscoring the urgency of understanding the evolving legal landscape.

ELI’s Healthy Communities Program works across law, policy, and public health to promote environmental health, improve people’s quality of life, and produce equitable and resilient outcomes.

EXPERT STAFF

Cecilia Diedrich



ELI RESEARCH REPORT
Current Trends in Toxics Litigation

INTERNATIONAL

Advancing Equitable Water Tenure

Equitable access to water depends on the legal recognition of communities’ water tenure rights, particularly in contexts of severe scarcity.

In eastern Chad, such scarcity is exacerbated by the impacts of climate change, an ongoing influx of refugees, and unsustainable resource management. ELI assessed the gaps in water and land governance frameworks to identify pathways that promote secure, equitable, and sustainable water tenure for Chad’s rural communities.

ELI’s work on water tenure around the world is providing important evidence for efforts undertaken in partnership with the UN Food and Agriculture Organization to develop global principles for the responsible governance of water tenure. This work shapes how water tenure is defined and implemented to strengthen protections for communities and sustainable development globally.

EXPERT STAFF

Jessica J. Troell



WATER & OCEANS

Guiding the Conversation on Deep-Sea Mining

The world’s deep ocean is vast and largely unexplored, spanning across countries’ exclusive economic zones and areas beyond national jurisdiction. It contains unique ecosystems rich in biodiversity, and metals and minerals formed over billions of years.

To meet the growing demand for critical resources, there are increasing calls for deep-sea mining (DSM). This includes a recently issued executive order, which calls for “immediate action.”

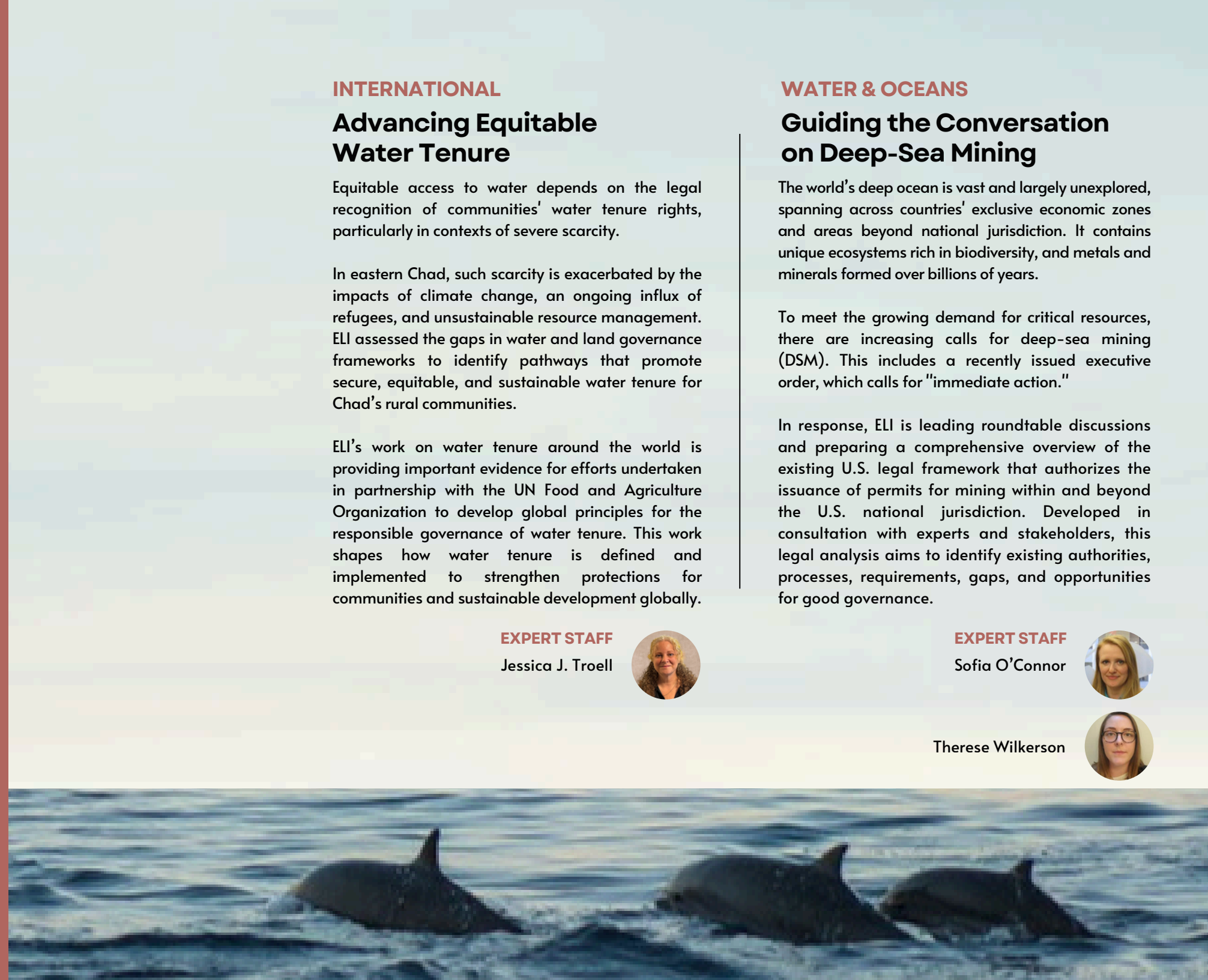
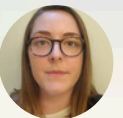
In response, ELI is leading roundtable discussions and preparing a comprehensive overview of the existing U.S. legal framework that authorizes the issuance of permits for mining within and beyond the U.S. national jurisdiction. Developed in consultation with experts and stakeholders, this legal analysis aims to identify existing authorities, processes, requirements, gaps, and opportunities for good governance.

EXPERT STAFF

Sofia O’Connor



Therese Wilkerson



OUR COMMUNITY

CHAMPIONS AND CHANGEMAKERS



2025 BOARD OF DIRECTORS

In 2025, EII's Board was a powerful force for change. As a group, they were an incredible resource to the organization, providing essential expertise and resources. As individuals, they served as champions for the organization. We cannot thank them enough.

EXECUTIVE COMMITTEE



Board Chair
Robert C. Kirsch
Retired Partner,
Wilmer Cutler Pickering
Hale and Dorr LLP



Vice Chair
Mason Emmett
Sr. Vice President, Public
Policy, Constellation
Energy Generation, LLC



Secretary
Peggy Otum
Partner, WilmerHale



Treasurer
James Colopy
Partner, Farella
Braun + Martel



Jordan Diamond
President,
Environmental Law
Institute



Jay Duffy
Sr. Attorney, Center for
Applied Environmental
Law and Policy



Stacey Halliday
Partner, Arnold & Porter



Gwendolyn Keyes
Partner, DLA Piper



Brad Marten
Chairman,
Marten Law PLLC



Margaret Peloso
Global Climate Officer
& Executive Director,
Chubb Charitable
Foundation



Margaret Spring
Chief Conservation &
Science Officer,
Monterey Bay Aquarium



Mathy Stanislaus
Vice Provost,
Executive Director,
The Environmental
Collaboratory,
Drexel University



Carlton Waterhouse
Professor of Law,
Howard University
School of Law



Marisa Blackshire
Vice President,
Environment and
Regulatory Law,
Bloom Energy



Marisa Buchanan
Washington, D.C.



Tran Che
Sustainability Director &
Executive Human Rights
Counsel, GE Vernova



Nadira Clarke
Partner,
Hogan Lovells US LLP



Paul Davies
Partner,
Latham & Watkins



Sally Fisk
Vice President & Assistant
General Counsel, Chief
Counsel, Environmental &
Sustainability Law, Pfizer Inc.,



Jeremy Fogel
Executive Director, Berkeley
Judicial Institute, University
of California-Berkeley
Law School



Juge Gregg
Partner,
Crowell & Moring LLP



Ebony Griffin-Guerrier
Counsel,
Singleton Schreiber



Daniel Hemel
Professor of Law, New
York University
School of Law



John Lovenberg
Vice President,
Environment &
Sustainability, BNSF
Railways



Raymond Ludwizewski
Partner, Gibson,
Dunn & Crutcher



Michael Mahoney
Environmental
Compliance Lead, Teva
Pharmaceuticals



Angeles Murgier
Strategy and
Partnerships,
Fundación Rewilding



Granta Nakayama
Partner,
King & Spalding LLP



Davina Pujari
Partner, WilmerHale



Ethan Shenkman
Partner, Arnold & Porter



Mark Templeton
Clinical Professor of
Law, Director of the
Abrams Environmental
Law Clinic, University
of Chicago Law School



Hilary Tompkins
Partner, Hogan Lovells



Kim Udovic
Vice President &
Assistant General
Counsel – Regulatory,
Toyota Motor North
America, Inc.



Carita Walker
Los Angeles, CA



Michael Wall
Chief Litigation Officer
of the Natural
Resources Defense
Council



Alex Wang
Professor of Law,
UCLA School of Law

INDIVIDUAL SUPPORT

ELI's impact is made possible by a community of generous supporters.

FOUNDER'S CIRCLE

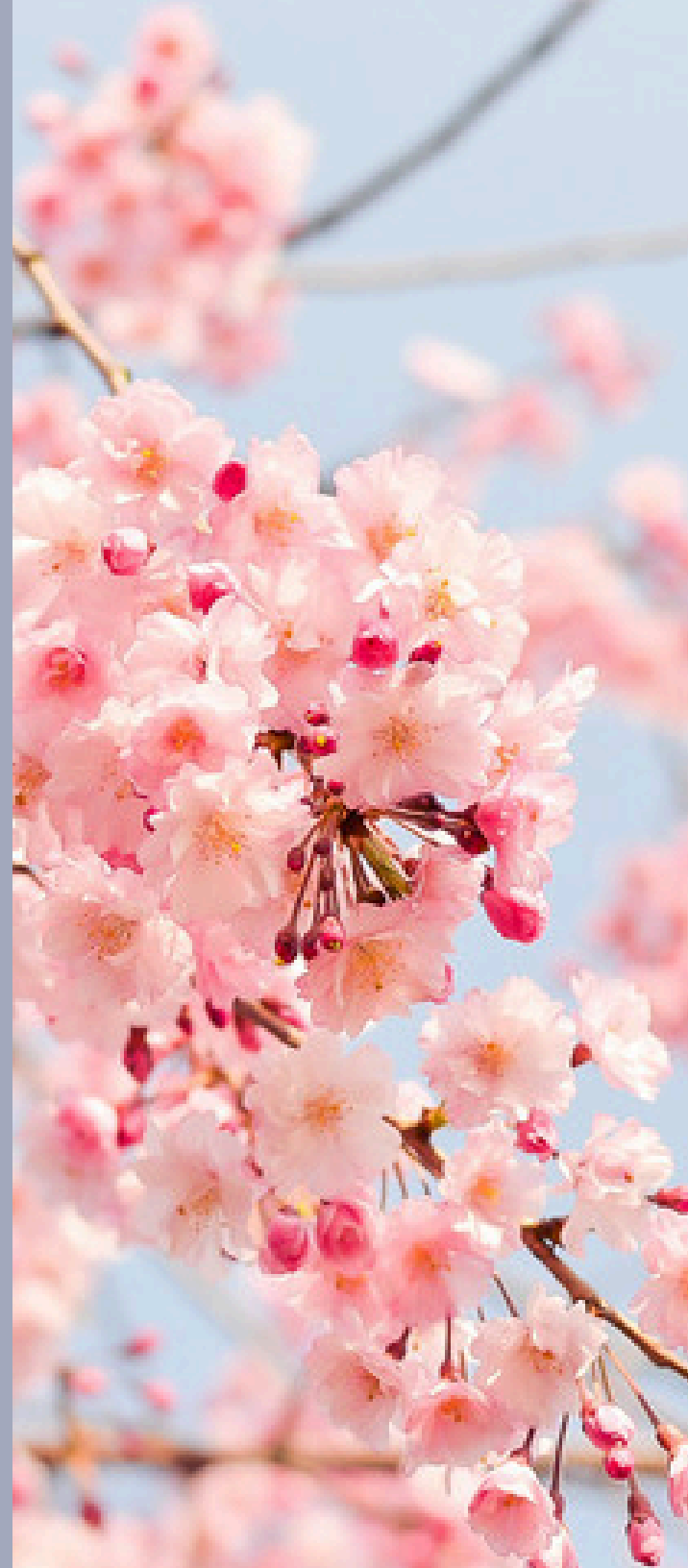
The Founder's Circle honors those who choose to secure the long-term future of ELI through a planned or estate commitment.

Leslie Carothers	William H. Meadows
John C. Cruden	Thomas Munteer
Stephen Dujack	Elissa Parker
Ridgway M. Hall, Jr.*	John A. Pendergrass
Carol Adaire Jones	Ann Powers
Craig Mathews*	Scott Schang

*Remembered with gratitude



**HONORING
CRAIG MATHEWS**
1929 - 2026
Co-Founder, ELI



LEADERSHIP COUNCIL

The Leadership Council recognizes leaders who support ELI with a gift of \$5,000 and more.

We are especially grateful to the steering committee, chaired by Kathy Robb, for their support throughout the year.

Anonymous	Amy L. Edwards	Carol Jones	Stacey Mitchell	John P. and Virginia B. Sall
Sarah Bell	Dan Emmett	Michael C. Kavanaugh	Tom Munteer	Justin Savage
Lynn Bergeson	Mason Emmett	Gwendolyn Keyes	Angeles Murgier	Scott Schang
Kenneth Berlin	David Erickson	Laurence Kirsch	Kevin Murray	Ethan Shenkman
Marisa Blackshire	Adeeb Fadil	Robert C. Kirsch	Granta Nakayama	Margaret Spring
J. Tom Boer	Linda Fisher	Adam M. Kushner	Kirsten Nathanson	Mathy Stanislaus
Linda K. Breggin	Sally R. K. Fisk	Elliott Laws	Peggy Otum	Donald Stever
Marisa Buchanan	Jeremy Fogel	Richard Leahy	Vickie Patton	Margaret N. Strand
Laurie Burt	C. Scott Fulton	Larry Liebesman	Margaret Peloso	Edward L. Strohbehn, Jr.
Leslie Carothers	J. William Futrell	Christopher Locke	John Pendergrass	Robert Sussman
Ruth Ann Castro	Michael B. Gerrard	John Lovenburg	Robert Perciasepe	Nelson S. Talbott Foundation
Tran Che	Michael Goodstein	Raymond Ludwizewski	Robert V. Percival	William L. Thomas
Loyti Cheng	Carol Green	Jane C. Luxton	Kevin J. Poloncarz	Hilary Tompkins
Lily Chinn	Juge Gregg	Michael Mahoney	Ann Powers	Michael Traynor
Nadira Clarke	Ebony Griffin-Guerrier	Elizabeth Malone	Judith Praitis	Kimberly Udovic
James Colopy	Paul E. Hagen	Byron Marchant	Davina Pujari	Michael Vandenberg
Ann Condon	Stacey Halliday	Martha Marrapese	Catharine Ransome	Carita Walker
Julia Copen	Daniel Hemel	Roger R. Martella, Jr.	Martha L. Rees	Alex Wang
John C. Cruden	Tracy Hester	Bradley M. Marten	Christopher Reynolds	Carlton Waterhouse
Paul Davies	Margaret A. Hill	Craig Mathews	Bruce Rich	Benjamin F. Wilson
Beth Deane	Robert "Buzz" Hines	Keith Matthews	Kathy B. Robb	
Jordan Diamond	Charles Howland	David E. Menotti	Nicholas Robinson	
Jay Duffy	Brian D. Israel	Gail Milliken	Shailesh Sahay	
Alexandra Dunn	Carrie Jenks			

PEOPLE-POWERED PROGRAMS

Donor support powers our work.

The following programs were made possible in whole or in part by generous individuals.

FIRESTONE POLICY FORUM

In honor and in recognition of Judge Nancy B. Firestone, and with the generous support of Patricia Payne and the rest of the Firestone family, ELI continues her legacy of service. The Firestone Policy Forum serves as an annual occasion to bring the environmental community together around a cutting-edge question. Our 2025 Forum focused on cooperative federalism and state-level approaches to environmental and energy policy.

“ ELI has played an instrumental role in various aspects of... environmental law, in education, and in furnishing of objective data that can be useful for decisionmakers... I think it's particularly important to develop forums for people with different perspectives on the environment and other issues in our society to come together.

- Edwin Kneeder
Former Deputy Solicitor General



LEARN MORE
Judge Firestone's Legacy

Jordan Diamond, Edwin Kneeder, Shawn LaTourette, Julie Moore, James Jennings, David Paylor



Western Boot Camp participants, hosted by Holland & Hart in Denver, CO.

INVESTING IN OUR PLANET'S FUTURE LEADERS

Through our Future Leaders Program, ELI invests in exceptional talent: pairing emerging leaders with mentors, immersing them in hands-on work, and connecting them with a community of peers who share their drive.

This year, our connections were more important than ever. Through the Jim Rubin Fellowship and the Research Associate program, we wove future changemakers into the community. Through Boot Camp and Summer School, we shared tools and reference points to understand the big picture. With the Women in Environmental Law and Leadership community, we helped facilitate conversation and build connections between dedicated practitioners.

By reaching these individuals, and uplifting each other, we can transform the future of environmental law.

“ Because of ELI, I gained lifelong mentors, as well as invaluable experience that I am excited to bring with me to Harvard Law School.

- Taalin RaoShah
Research Associate
2023-2025

INSTITUTIONAL SUPPORT

ELI's programming to advance environmental protection through law, policy, and science is made possible by our corporate, foundation, and other institutional donors and partners.

FOUNDATIONS & STRATEGIC PARTNERS

Alaska Conservation Foundation	The William and Flora Hewlett Foundation
Amigos Bravos	International Union for Conservation of Nature
Beveridge and Diamond	Internet Society Foundation
Builders Vision	Jubitz Family Foundation
California Ocean Protection Council	Esther A. & Joseph Klingenstein Fund
ClimateWorks Foundation	Leaves of Grass Fund
Daughtery Water for Food Global Center	Lincoln Institute of Land Policy
Dynamic Planet	Monterey Bay Aquarium Foundation
Food and Agriculture Organization of the United Nations	MSB Cockayne Fund
Forsythia Foundation	The Curtis and Edith Munson Foundation
Freedom Together Foundation	Natural Resources Defense Council
Global Environment Facility	New Venture Fund
The Jeremy and Hannelore Grantham Environmental Trust	The New York Community Trust
The Gulf and Caribbean Fisheries Institute	

Pew Charitable Trusts
Rights and Resources Initiative
Alfred P. Sloan Foundation
Bernard and Anne Spitzer Charitable Trust
Swedish Postcode Foundation
Tulane Law School
University of Nebraska
Vanderbilt Law School
Waitt Institute
Walton Family Foundation
Wasserman-Slotkin Family Charitable Giving Fund
WaterAid
The Water Foundation
The World Bank Group
World Wildlife Fund

PRO BONO SUPPORT

A huge thanks for the generous support of our pro bono partners whose partnership is critical to enabling our mission.

Beveridge & Diamond PC
for general counsel

Cooley LLP
for legal counsel

Latham & Watkins LLP
for legal counsel

Morgan Lewis & Bockius LLP
for trademark and copyright counsel

Paul Hastings LLP
for employment counsel

Wilmer Cutler Pickering Hale and Dorr LLP
for legal counsel





Jordan Diamond, Serena McIlwain, Ben Grumbles, William K. Reilly, Robert C. Kirsch

2025 ANNUAL ENVIRONMENTAL ACHIEVEMENT AWARD DINNER

HONORING BEN GRUMBLES & THE ENVIRONMENTAL COUNCIL OF THE STATES

ELI proudly recognized Ben Grumbles and the Environmental Council of the States (ECOS) for their outstanding contributions to cooperative federalism. Their commitment to collaborative governance demonstrates how shared understanding can drive meaningful solutions. Their leadership provides a critical forum for states to collaborate, share best practices, and foster their role in environmental governance.

DINNER SPONSORS

For decades, ELI's Environmental Achievement Award Dinner has connected environmental professionals from around the world. New bonds of cooperation are forged amongst our community each year, made possible thanks to the involvement of our outstanding sponsors.

ROCKY MOUNTAIN LEGACY SPONSORS

Beveridge & Diamond PC

GREAT LAKES STEWARD SPONSORS

Akin Gump

Alston & Bird LLP

Bergeson & Campbell, P.C.

Bracewell

Constellation

Daikin US

EPLETT LLC/R3USA LLC

Farella Braun + Martel

FGS Global

First Environment

FTI Consulting

HEELS with Professors
Waterhouse and Martella

Holland & Knight

K&L Gates

Kirkland & Ellis

Leslie Carothers

Marten Law

McGuireWoods

Monterey Bay Aquarium

Morgan Lewis

Paul Hastings

Perkins Coie

Pfizer

Sidley Austin

Skadden Arps

Toyota Motor North America

Van Ness Feldman Wiley

IN-ABSENTIA SPONSORS

Center for Climate and Energy
Solutions

PACIFIC COAST AMBASSADOR SPONSORS

Arnold & Porter

Baker Botts

Crowell & Moring

DLA Piper

Hogan Lovells

Hunton Andrews Kurth LLP

King & Spalding

Latham & Watkins

Shook, Hardy & Bacon

WilmerHale

LOUNGE SPONSORS

BNSF

Cooley

Greenberg Traurig

Jenner & Block

JS Held

Kelley, Drye & Warren LLP

Paul, Weiss, Rifkind, Wharton & Garrison

Pillsbury

Simpson Thacher & Bartlett LLP

MEMBERSHIP COMMUNITY FOR GOOD

ELI empowers Members with cutting-edge, evidence-based research; timely updates on professional developments; and cross-cutting insights from our esteemed legal, policy, and scientific experts. We are grateful for our 2025 Members, and look forward to sharing our work with them in 2026.

CHAMPIONS

Akin Gump Strauss Hauer & Feld LLP

ArentFox Schiff LLP

Arnold & Porter Kaye Scholer LLP

Babst, Calland, Clements & Zomnir, P.C.

Bergeson & Campbell, P.C.

Beveridge & Diamond, P.C.

Blank Rome LLP

Bracewell LLP

Bryan Cave Leighton Paisner LLP

Chesapeake Bay Foundation

Chesapeake Legal Alliance

City of Greeley, CO

Constellation Energy

Crowell & Moring LLP

Defenders of Wildlife

DLA Piper LLP (US)

Earthjustice

Geosyntec Consultants

Hogan Lovells

Keller and Heckman LLP

King & Spalding LLP

King County Hazardous Waste Management Program

Kirkland & Ellis LLP

Marten Law LLP

Minnesota Department of Transportation

New Mexico Environment Department

Nossaman LLP

Ocean Conservancy

Paul Hastings

Perkins Coie LLP

Shook, Hardy & Bacon L.L.P.

Sidley Austin LLP

Skadden, Arps, Slate, Meagher & Flom LLP

Southern Environmental Law Center

Stoel Rives LLP

U.S. Coast Guard

Wiley Rein LLP

Wilmer Cutler Pickering Hale and Dorr LLP

GUARDIANS

Alliance for Peacebuilding

Alston & Bird LLP

Barnes & Thornburg LLP

BNSF Railway Company

The Boeing Company

British Library

Cabot Corporation

Center for Progressive Reform

Conservation Law Foundation

CropLife America

Davis Polk & Wardwell LLP

District of Columbia Department of Energy & Environment, Office of General Counsel

Environmental Law & Policy Center

Exponent, Inc.

Farella Braun + Martel LLP

Federal Energy Regulatory Commission

First Environment, Inc.

Great Rivers Environmental Law Center

Holland & Hart LLP

Holland & Knight LLP

Jenner & Block LLP

Kaplan Kirsch LLP

Lakeland Electric

Lockheed Martin Corporation

Monterey Bay Aquarium

New York City Law Department

North Dakota Department of Environmental Quality

Novo Nordisk

Oceana, Inc.

The Ocean Foundation

GUARDIANS (continued)

Oregon Department of Justice/Natural Resources Section

Ramboll

Roger Williams University School of Law

Simpson, Thacher, & Bartlett LLP

South Carolina Department of Natural Resources

Toyota Motor North America, Inc.

Troutman Pepper Locke

U.S. Air Force, Environmental Law Field Support Center

U.S. Small Business Administration

University of Maryland School of Law

Van Ness Feldman, LLP

Vanderbilt University Law School

Virginia Department of Transportation

Virginia Office of the Attorney General

ACADEMIC

ASU Sandra Day O'Connor College of Law

Boston College Law School

Boston University School of Law

BYU Law

Case Western Reserve University School of Law

College of the Atlantic

Duke University School of Law

Georgetown Law

Harvard Law School

Indiana University Maurer School of Law

Lewis & Clark Law School

National Taiwan University

New York University School of Law

Northeastern University School of Law

Northwestern University Pritzker School of Law

Pace University Elisabeth Haub School of Law

Stanford Law School

Suffolk University Law School

Syracuse University College of Law

Texas A&M University School of Law

Tulane University Law School

UCLA School of Law

University of Colorado Law School

University of Denver Sturm College of Law

University of Florida Levin College of Law

University of Iowa College of Law

University of Kansas School of Law

University of Miami School of Law

University of Michigan Law School

University of Minnesota Law School

University of Nevada, Las Vegas William S. Boyd School of Law

University of Notre Dame Law School

University of Oregon School of Law

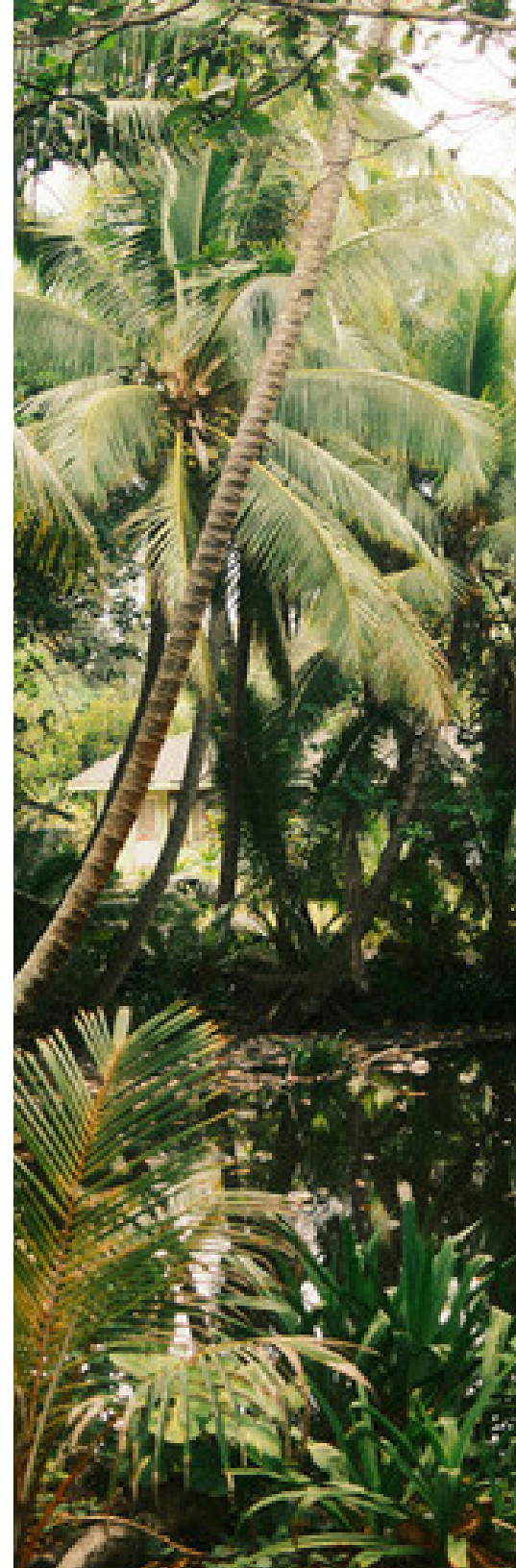
University of Pennsylvania Carey School of Law

University of Washington School of Law

Vanderbilt University Law School

Vermont Law & Graduate School

Washburn University School of Law



CELEBRATING OUR STAFF

LEADERSHIP TEAM



Jordan Diamond
President



Nick Collins
Vice President,
Communications



Katie Mabardy
Vice President,
Development



Kayleigh Marshall
Interim Chief
Financial Officer



Sandra Nichols Thiam
Vice President,
Research & Policy

“As a former head of the EPA, I want to say this clearly: the values that ELI upholds—rigor, evidence, collaboration, integrity—are not partisan values. They are the foundation of effective environmental governance. They are the same values that have animated the best of EPA’s work for over half a century.

– William K. Reilly
Former EPA Administrator



Jay Austin
Sr. Attorney; Editor-in-
Chief, Environmental
Law Reporter



Isabella Blofeld
Board Relations &
Development Manager



Linda K. Breggin
Sr. Attorney; Director of
the Center for State
and Local Governance



Carl Bruch
Sr. Attorney; Director,
International Programs



Madison Calhoun
Educational
Programming Attorney;
Sr. Manager,
Educational Programs



Eleanor Crone
Research Associate



Ninoska Diaz
Director, Finance



Susannah Dibble
Staff Attorney



Cecilia Diedrich
Staff Attorney



John M. Doherty
Science & Policy Analyst



Sebastian Duque Rios
Research Associate



Doreen Easterling
Sr. Accountant



Stefanie Garcia
Human Resource
Director,
People & Equity



Alicia Grace
Administrative
Manager



Rachel Jean-Baptiste
Director, Publications



Hunter Jones
Sr. Editor, Environmental
Law Reporter



Beth Kantrowitz
Grants & Contracts
Manager



Rebecca L. Kihlsinger
Sr. Science & Policy
Analyst; Director,
Wetlands Program



Sofia O'Connor
Sr. Attorney; Director,
Ocean Program



Jarryd Page
Staff Attorney



Kristine Perry
Staff Attorney



Mara Pusic
Research Associate



Branwen Ranck
Director of Philanthropic
Partnerships



Taalin RaoShah
Program Coordinator



Journey Lipscomb
Research Associate



Helene T. Krasnoff
Sr. Attorney; Director,
Climate Judiciary
Project



Thomas Lutken
Science Fellow, Climate
Judiciary Project



Matthew Mitchell
Webmaster



Alexandria Nielson
Program Director,
Digital Economy
and the Environment



Jen Norman
Manager, Education
& Membership Events



Amy Reed
Sr. Attorney



Adam Schempp
Sr. Attorney; Director,
Western Water Program



Veronika Seider
Communications
Associate



William J. Straub
Editorial & Production
Coordinator



Natalie Triana
Research Associate



Jessica J. Troell
Sr. Attorney; Director,
International Water
Program; Africa
Program



Margaret Von Rotz
Public Interest
Environmental
Law Fellow



Laura Van Wyk
Human Resource
Director, Benefits &
Compliance



Therese Wilkerson
Staff Attorney

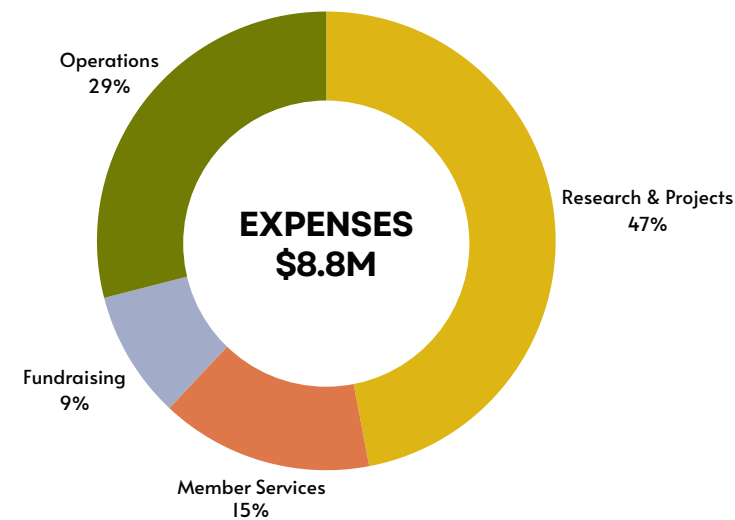
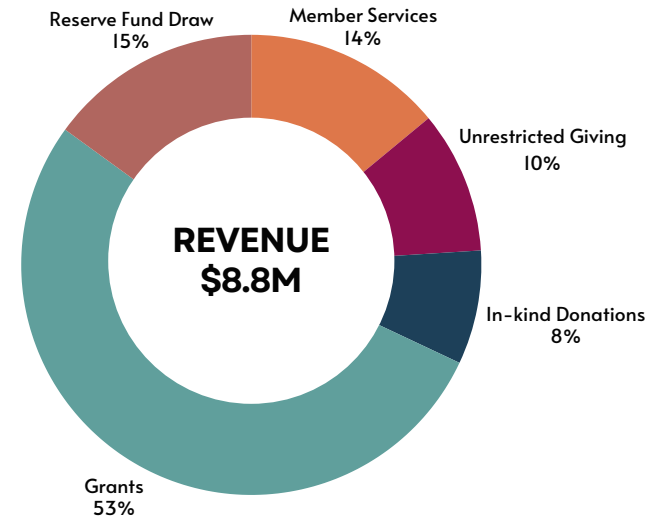


Pabu Collins
Chief Crumbs
Co-Officer



Sunshine Marshall
Chief Crumbs
Co-Officer

FINANCIAL RESOURCES



A complete, audited 2025 financial statement is available on our website at www.eli.org/annual-report.

MANAGING FOR IMPACT AND RESILIENCE

Dear ELI community,

For many nonprofits, 2025 was a challenging year. Changes at the federal level shook the foundation of ELI’s budget—forcing difficult choices about how to align our resources with our work.

Those choices were not easy. We reduced costs, including staff, while working to protect what makes ELI effective: the quality of our work and the people behind it.

At the same time, we saw real progress. Our efforts to diversify revenue are beginning to take hold, including our strongest year of individual giving to date. This was made possible by the generosity and trust of our community. You make this work possible.

In short, the pressures facing our field are real, but we are confident in ELI’s direction and the steps we are taking to grow our resilience.

LOOKING AHEAD: LEADERSHIP FOR THE FUTURE

This year also marks a transition in financial leadership. After more than two decades of service, Loretta Reinersmann is retiring as Chief Financial Officer. We can’t overstate our gratitude for her steady leadership, deep compassion, and unwavering commitment to ELI’s mission.

We are now pleased to welcome Kayleigh Marshall into the role of Interim Chief Financial Officer and look forward to what’s ahead.

“As ELI looks ahead, its institutional strength and steadfast commitment to its mission remain evident. My priority is to advance the financial clarity and stability that position the organization’s continued progress with confidence.”

Loretta Reinersmann
Vice President, Finance & Administration



Kayleigh Marshall
Interim Chief Financial Officer





ENVIRONMENTAL LAW • INSTITUTE

www.eli.org/donate

1730 M St NW, Suite 700
Washington, D.C. 20036