

ELI & EDF Webinar:

Energy Programs that Make a Difference

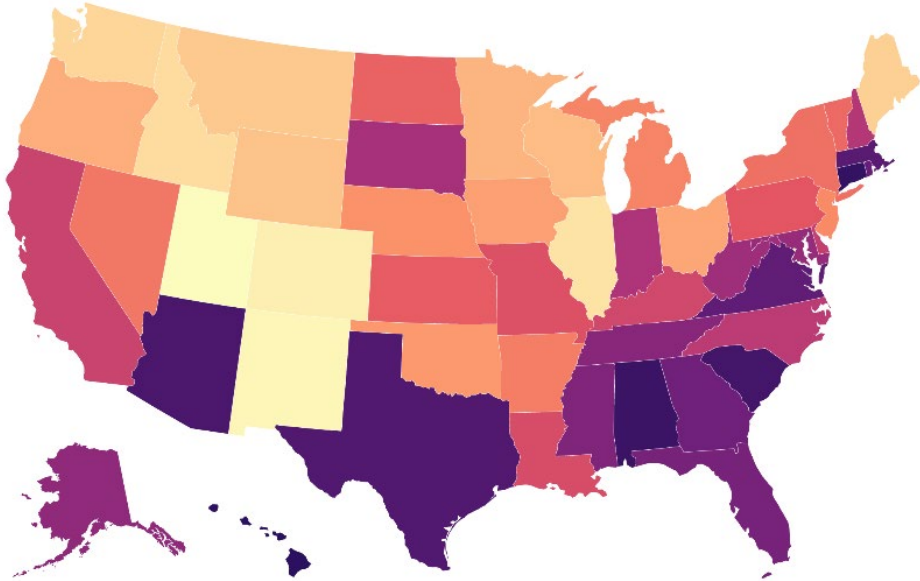
**Jollette Westbrook, Dir. & Sr. Attorney,
Regulatory Solutions**

Environmental Defense Fund

April 8, 2025



Consumers' gas and electric bill debts rising nationwide

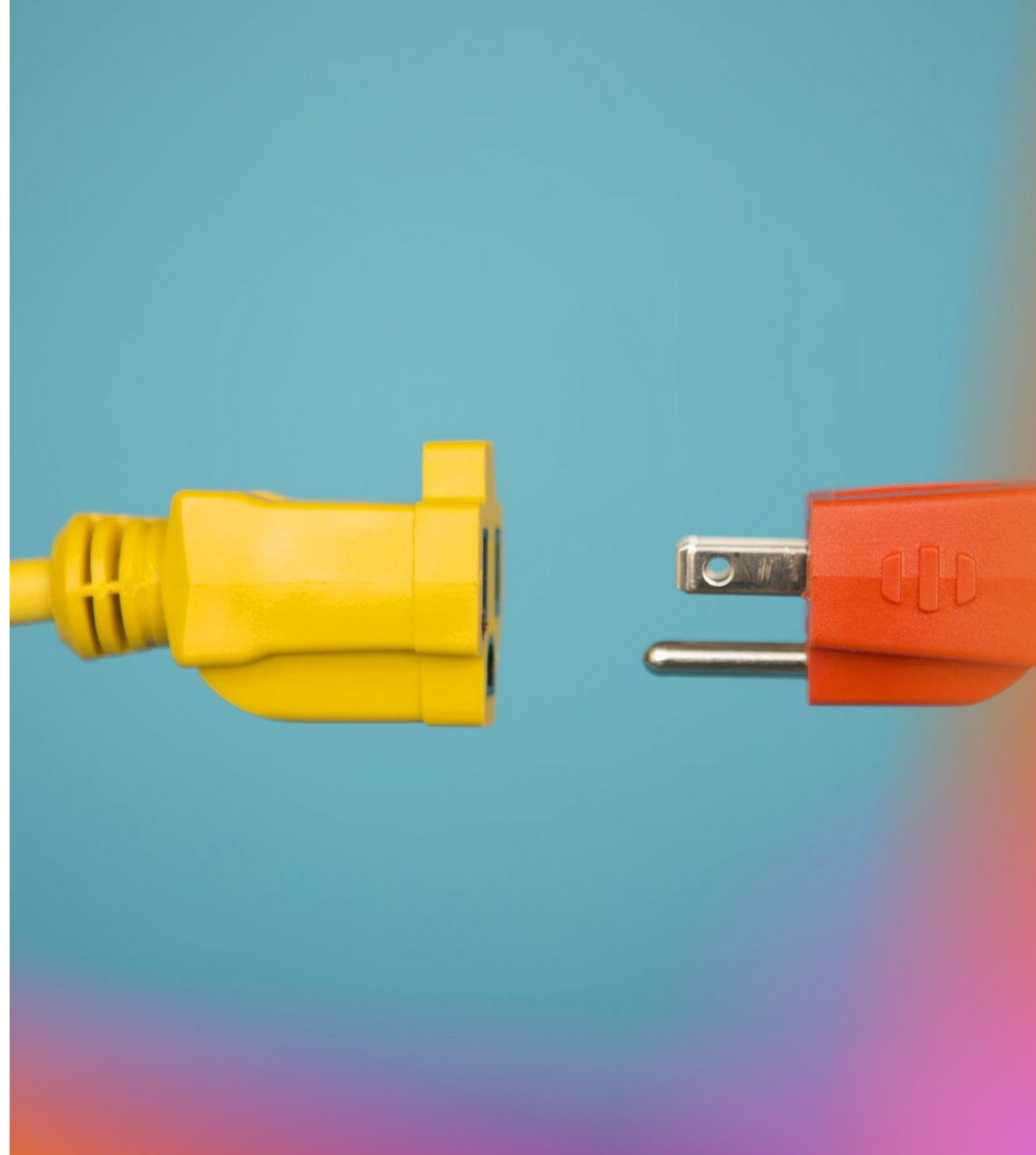


- Consumers owe roughly **\$25 billion** as of June 2025
- Black households **3X** times as likely as white households to carry overdue utility balances
- Shutoffs affect health – As climate warms, heat-related shutoffs in summer can be fatal
- Q1 2022 to Q2 2025, average monthly energy costs nationwide rose **35%**

Well-designed energy programs can increase affordability for consumers.

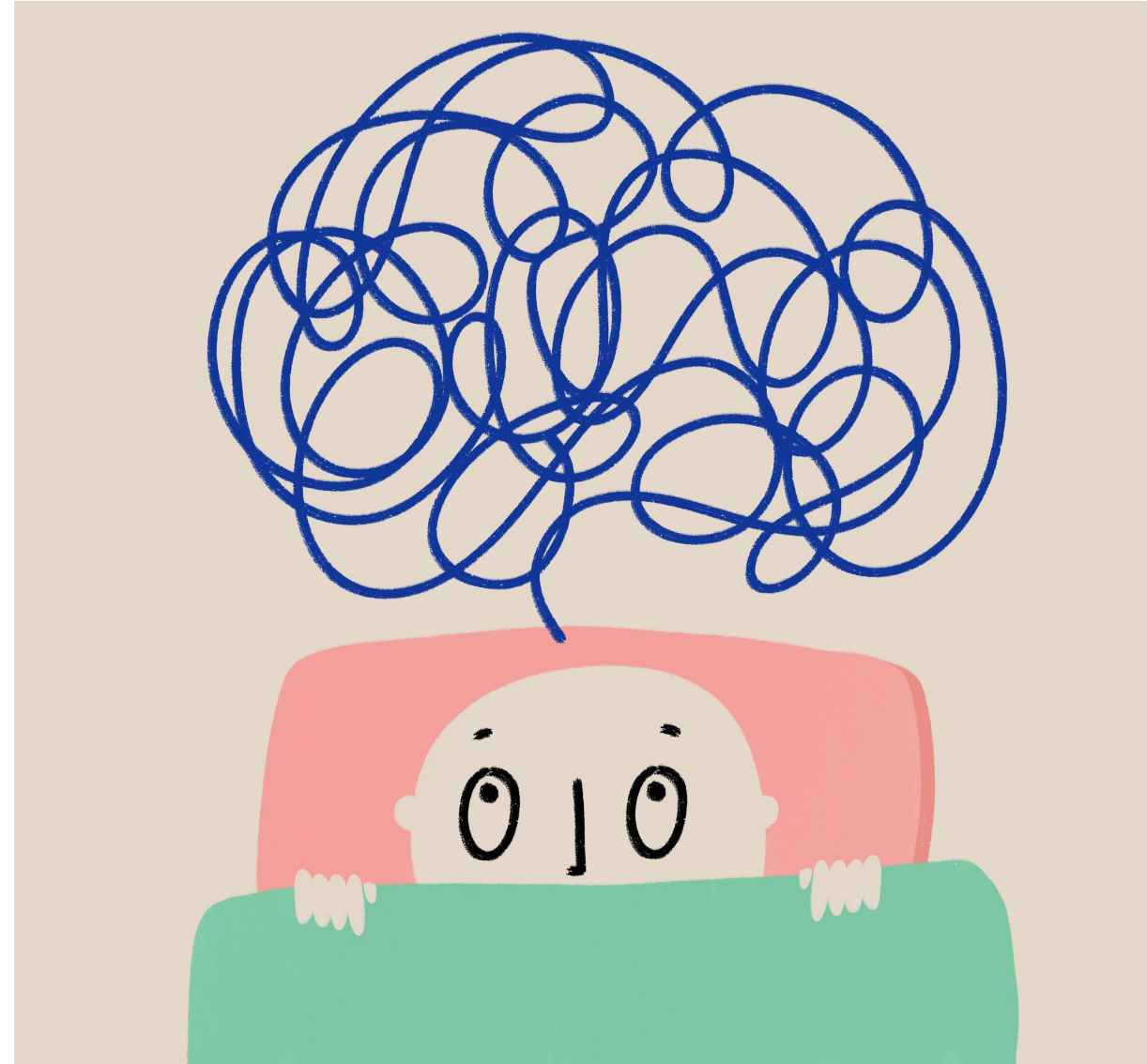
IT'S INCREASINGLY
DIFFICULT FOR
HOUSEHOLDS TO
MAKE ENDS MEET AND
PAY UTILITY COSTS

WHAT DO WE DO?????



ANSWERS PLEASE!

- Lower energy costs through **efficiency**
- Help economically vulnerable people with **rate structures**
- **Opt people into** savings programs unless they opt out
- Reduce barriers to savings by allowing **self-attestation**
- Increase **community education** so everyone can benefit





Energy efficiency programs lower energy costs

- Energy efficiency is the “**cheapest fuel**” - lowers demand, uses less energy for the same level of service
- States spent more than **\$8 billion** on utility-sector energy efficiency programs in 2023
- Top five states for energy efficiency investments: CA, MA, NY, MD, VT

Yet some states are currently considering energy efficiency budget **reductions** in the mistaken idea that spending less increases affordability.

Energy Efficiency Saves Consumers Money

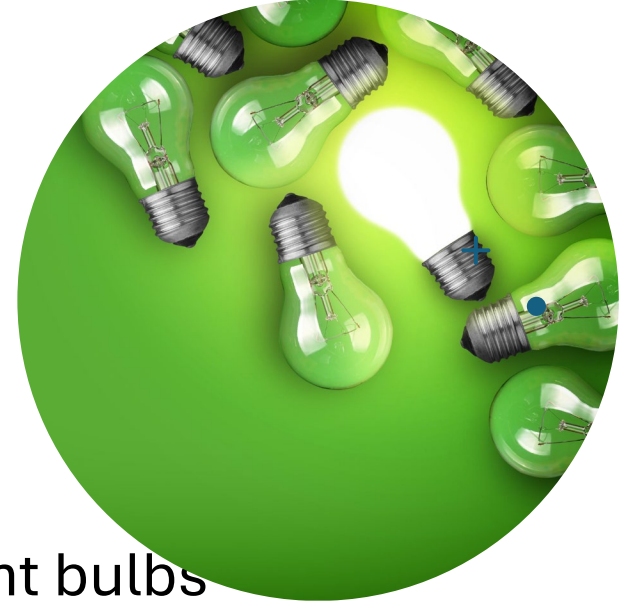
Studies show average annual savings of about \$1,000 per person across the U.S.

LED light bulbs consume **80-90% less energy** than incandescent bulbs

Energy Star Appliances lead to savings up to **\$450.00 annually**

- Washing machines use **20%–25% less energy** and **30%–33% less water**
- Refrigerators use **10%–35% less energy** than standard models

Energy efficiency also benefits the environment, climate, and people's health



Energy Efficiency Program Components

- **Rebates** on energy efficient washers, dryers, heat pumps, windows etc.
- **Equity:** Higher rebates and incentives for low-income households

More work is needed

- How to expand energy efficiency program benefits to **renters**?
- How to **educate** consumers and decisionmakers about the value of energy efficiency?



Rate structures are an effective policy solution

- **Tiered Low-Income Discount Rates**

Overview: Bill credits based on income

Benefits: Increase affordability, reduce energy poverty, reduce shutoffs

Where: IL, MA, NY

- **Time of Use Rates (TOU)**

Overview: Costs vary based on the time of day, season and demand

Benefits: Customers can choose times of lower prices, also lowers costs for producers; evens out grid use

Implementation: Advanced Metering Infrastructure (AMI)



Why community engagement matters

- Ensures that communities hosting infrastructure receive meaningful benefits
- Builds trust and reduces opposition to projects
- Prevents costly delays, litigation and redesign
- Aligns energy goals with local priorities



Community engagement: why and how

- The energy transition will require more infrastructure, and communities must be involved
- Advocates should be involved in siting and permitting proceedings to center community interests
- Community engagement: early, genuine, often
- Community Benefit Agreements make community solutions concrete



INTERVENOR COMPENSATION

Enabling more voices to participate in PUC proceedings

Intervenor support programs help community groups participate in energy proceedings by providing funding for legal and technical expert fees. ***More than 20 states have active programs.***

Why it matters

- Allows lived experiences to shape energy proceedings.
- Reduces cost barriers for groups most affected by high energy burdens.
- Leads to fairer and more affordable outcomes.

Recently enacted intervenor compensation program in MA

- Defined who is eligible to petition
- Set a standard that must be shown
- Earlier payments to intervenors

THANK YOU

Jollette Westbrook
jwestbrook@edf.org

For more information on centering community voices for increased energy equity and affordability, please visit

communityvoicesinenergy.org



Community
VOICES
IN ENERGY