

State Wildlife Action Plans: *Working Together to Prevent Wildlife From Becoming Endangered*



ASSOCIATION *of*
FISH & WILDLIFE
AGENCIES



TEAMING WITH WILDLIFE
a natural investment

Wildlife Action Plans for Every State



A Legacy of Success



An Unfinished Agenda





TEAMING WITH WILDLIFE

a natural investment

State Wildlife Action Plans

*The Nation's Core Program for
Preventing Wildlife from Becoming
Endangered in Every State.*

State Wildlife Action Plans

- State Wildlife Grants
- Wildlife Conservation and Restoration Program



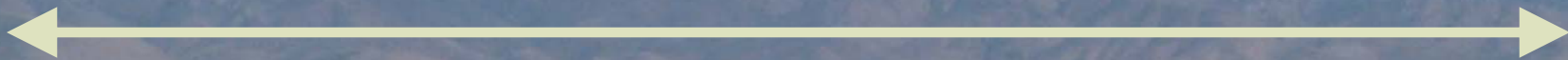
State Wildlife Action Plans

Minimum Legal Requirement

The Opportunity

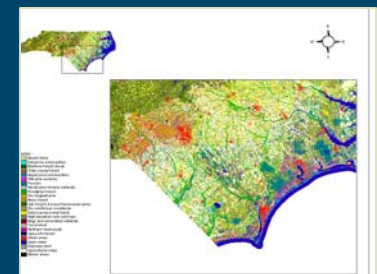
Outline how state plans to use new funding

Engage Partners in a Strategic Vision for Wildlife Conservation



Eight Required Elements

1. **Wildlife** distribution and abundance, focused on species of greatest need
2. **Habitat** extent and condition
3. **Problems** and research needs
4. **Conservation Actions** and priorities



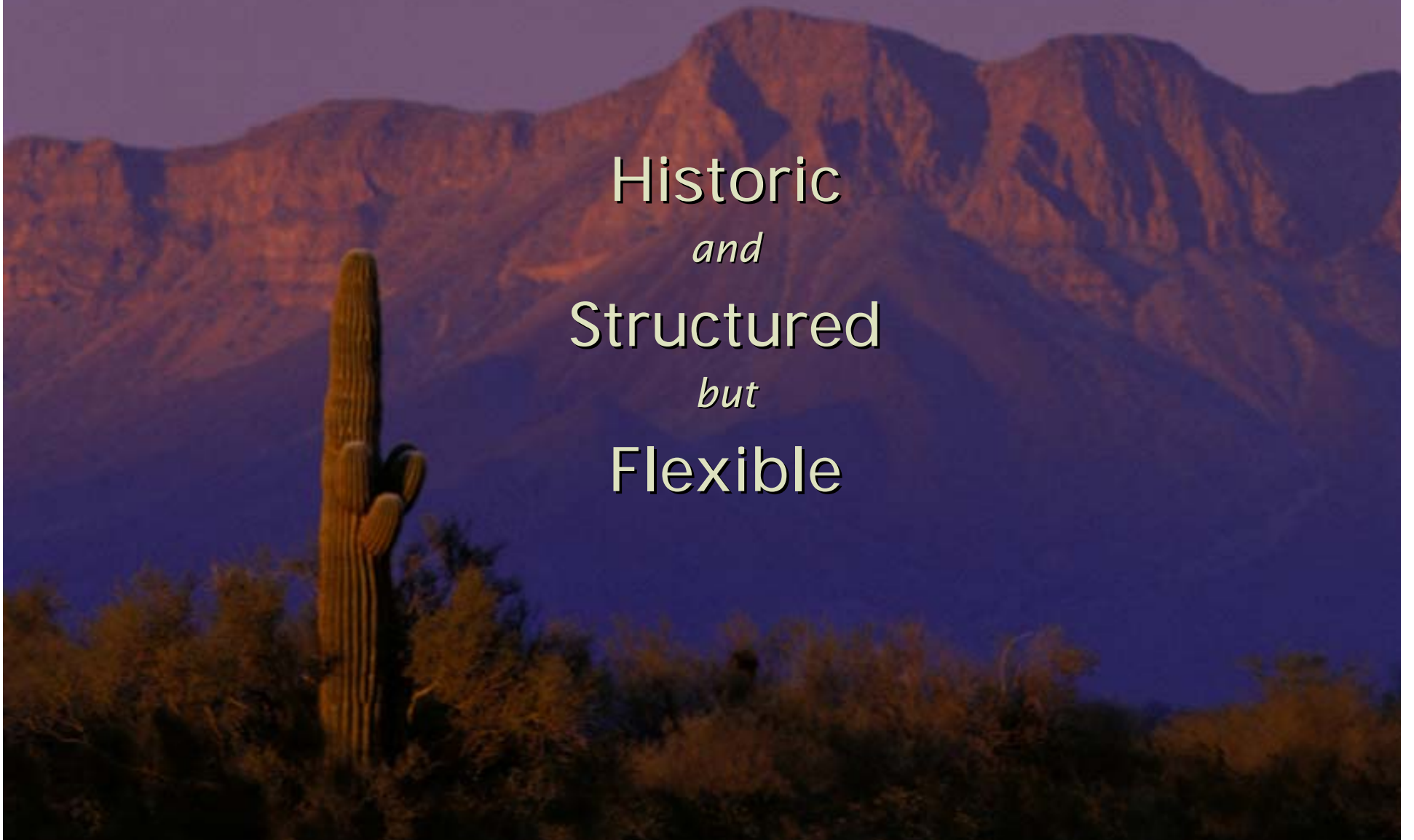
Eight Required Elements

5. Monitoring and Evaluation
6. Plans to Review and Revise
7. Coordination with other agencies, planning efforts
8. Broad public participation



State Wildlife Action Plans

Historic
and
Structured
but
Flexible



State Wildlife Action Plans

Table 5-6. Statewide Stresses on Birds

Stress level: Blank = Low, Moderate, High
 Terms: For = Forest; Warm = Warm Season; Herb = Herbaceous; Ag = Agricultural

Stress	WOODED				GRASSLANDS		WETLANDS		AG LAND	MEAN
	FOREST	WET FOREST	WOOD LAND	SHRUB	WARM HERB	SAVANNA	WET SHRUB	HERB WETLAND		
Invasive non-native species.	H	H	H	H	H	H	H	H	H	H
Loss of connectivity	H	H	H	H	H	H	H	H	H	H
Fragmentation	H	H	H	H	H	H	H	H	M	H
Absence of Habitat	M	H	H	H	H	H	H	H	H	H
Detrimental grazing	M	H	H	H	H	H	H	H	H	H
Conversion to row crops	M	M	M	H	H	H	H	H	H	H
Pesticide/herbicide use		M	M	H	H	H	H	H	H	H
Conversion to non-native grasses			M	H	H	H				
Climate change	H	H	M	M	M	M				
Conversion for residential use	H		H	M	H	H				
Excessive recreational use	H	M	H	M	M	M				
Fire suppression			H	H	H	H				
Disease/pathogens/insect damage	M	M	M							M
Drainage		H	M							
Road construction	M	M	M	M	M	M				M
Timber harvest	H	M	H							H
Flooding caused by dams		M								
Conv. for non-farm industrial use			M	M	M	M				
Fire use			M	H						M

89

Maps 8-9 through 8-14 were combined to identify priority areas for conservation actions (Map 8-17). The shaded areas on the map indicate areas identified as a priority for action by one or more of the plans referenced above. Darker shading indicates areas where progressively more of the plans have overlapping priorities and indicate where partnering to maximize the effect of resources should be possible.

Map 8-17. High Priority Areas for Cooperative Conservation Actions

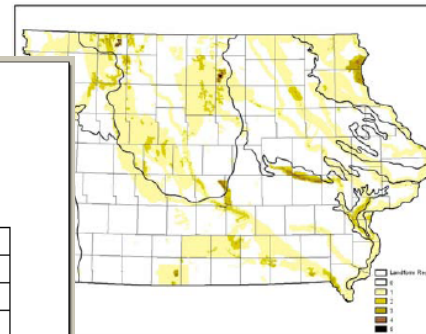


Table 14-2. Habitat Preferences of SGCN - Migratory Birds

Habitat Class: 1 = Forest, 2 = Wet Forest/Woodland, 3 = Woodland, 4 = Shrubland, 5 = Wet Shrubland, 6 = Warm Season Herbaceous, 7 = Herbaceous Wetland, 8 = savanna, 9 = Agricultural Land

Common Name	Scientific Name	Distribution	Habitat Class	Habitat Preference
American white pelican	<i>Pelecanus erythrorhynchos</i>	N, Central	7	wetland
Yellow rail	<i>Columicops noveboracensis</i>	N, E, Central	6, 7, 9	wetland, grassland
Whooping crane	<i>Grus americana</i>	W, NE	6, 7, 9	wetland, grassland
American golden-plover	<i>Pluvialis dominica</i>	Statewide	7	wetland
American avocet	<i>Recurvirostra americana</i>	Statewide	7	wetland
Greater yellowlegs	<i>Tringa melanoleuca</i>	Statewide	7	wetland
Lesser yellowlegs	<i>Tringa flavipes</i>	Statewide	7	wetland
Solitary sandpiper	<i>Tringa solitaria</i>	Statewide	7	wetland
Hudsonian godwit	<i>Limosa haemastica</i>	Statewide	7	wetland
Marbled godwit	<i>Limosa fedoa</i>	W	7	wetland
Stilt sandpiper	<i>Micropalama himantopus</i>	Statewide	7	wetland
Buff-breasted sandpiper	<i>Tryngites subruficollis</i>	W	7, 9	wetland, short grassland
Short-billed dowitcher	<i>Limnodromus griseus</i>	Statewide	7	wetland
Golden-winged warbler	<i>Vermivora chrysoptera</i>	E	1, 3, 4	deciduous forest, open woodland shrubland
Canada warbler	<i>Wilsonia canadensis</i>	Statewide	1	deciduous forest
Le Conte's sparrow	<i>Ammodramus leconteii</i>	Statewide	6, 7, 9	grassland
Nelson's sharp-tailed sparrow	<i>Ammodramus nelsoni</i>	Statewide	6, 7, 9	grassland, wetland
Rusty blackbird	<i>Euphagus carolinus</i>	Statewide	2, 5, 7	riparian forest, wetland, wet shrubland

163

State Wildlife Action Plans

Table 10. Prioritization of Bird Species.

Species	Priority ^a	Eco-system	Habitat Type(s) ^b	State ^c	Prioritization Source							Staff Rec. ^d
					Federal ^a	NAWMP ^b	PIF ^c	Shorabird ^d	MANEM	NEWDTC ^e		
American Cystercatcher	1	Coastal	CC; CU	SC	FSC		I	NA S; ME 5				R, D
Bloxner's Thrush	1	Uplands	UM	E	FSC					Focal Spp.		R
Black Tern	1	Wetlands	WM, WL	E	FSC							
Blue-winged Warbler	1	Uplands	US				I					
Least Tern	1	Coastal	CU; CS; CE	E						Focal Spp.		R, D
Peregrine Falcon	1	Uplands	UR	E	FD							
Piping Plover	1	Coastal	CU	E	FT			NA S; ME 5				
Roseate Tern	1	Coastal	CC; CE	E	FE					Focal Spp.		
Saltmarsh Sharp-tailed Sparrow	1	Coastal	CS	SC			I					D, A
Sedge Wren	1	Wetlands	WM	E			IIC					R, D
Short-eared Owl	1	Uplands	US	SC								R, D
Upland Sandpiper	1	Uplands	US; UG	T								
American Bittern	2	Wetlands	WM, US									
American Black Duck	2	Wetlands	WM; WL; WF									
American Coot (breeding)	2	Wetlands	WM	SC								
American Pipit (breeding)	2	Uplands	UA	E								
American Three-toed Woodpecker	2	Uplands	UC	SC								
American Woodcock	2	Uplands	US; UD									
Blue-winged Warbler	1	Wetlands	WM									
American Woodcock	2	Coastal	CC; CO; CE	T								
Arctic Tern	2	Coastal	CC; CO; CE	T								
Atlantic Puffin	2	Coastal	CC; CO	T								
Bald Eagle	2	Coastal	CC; CE	T								
Baltimore Oriole	2	Wetlands	WL; WR									
	2	Uplands	UD									

Figure 11. Map of Southern Maine Ecoregion (South Coastal, Southwestern, and Southern Interior). (Source: Maine Office of GIS)

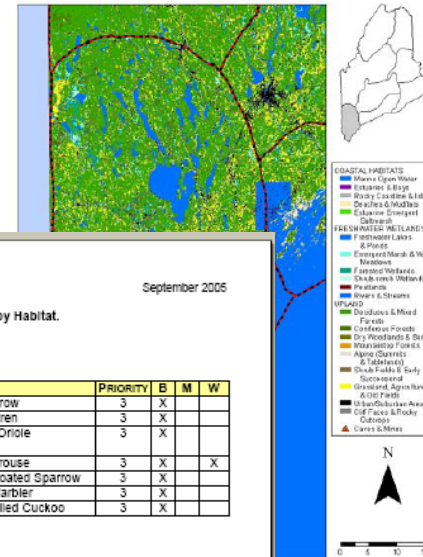


Table 30. Goals, Objectives, Threats, and Strategies for Priority Birds by Habitat. Shrub / Early Successional (Incl. regen. forest) (US)

Associated Species:

SPECIES	PRIORITY	B	M	W	SPECIES	PRIORITY	B	M	W	SPECIES	PRIORITY	B	M	W
Blue-winged Warbler	1	X			Eastern Towhee	2	X			Fox Sparrow	3	X		
American Woodcock	2	X	X		Field Sparrow	2	X			House Wren	3	X		
Blue-gray Gnatcatcher	2	X			Loggerhead Shrike (non-breeding)	2	X		X	Orchard Oriole	3	X		
Brown Thrasher	2	X			Whip-poor-will	2	X			Ruffed Grouse	3	X		X
Chestnut-sided Warbler	2	X			Willow Flycatcher	2	X			White-throated Sparrow	3	X		
Common Nighthawk	2	X			Carolina Wren	3	X			Yellow Warbler	3	X		
Eastern Kingbird	2	X			Common Yellowthroat	3	X			Yellow-billed Cuckoo	3	X		

Threats:

- Urban/suburban development
- Habitat fragmentation
- Lack of adequate disturbance events in remaining forested areas to keep in early successional condition
- Habitat loss on migration and wintering grounds

Goal: Conserve, restore and enhance populations of focal species in shrub / early successional habitat to ensure the overall conservation of all native species within this habitat.

General Objective:

1. Protect and maintain high priority habitats. (Refer to PIF Physiographic Area 9 plan for a comprehensive discussion on management and implementation strategies.)

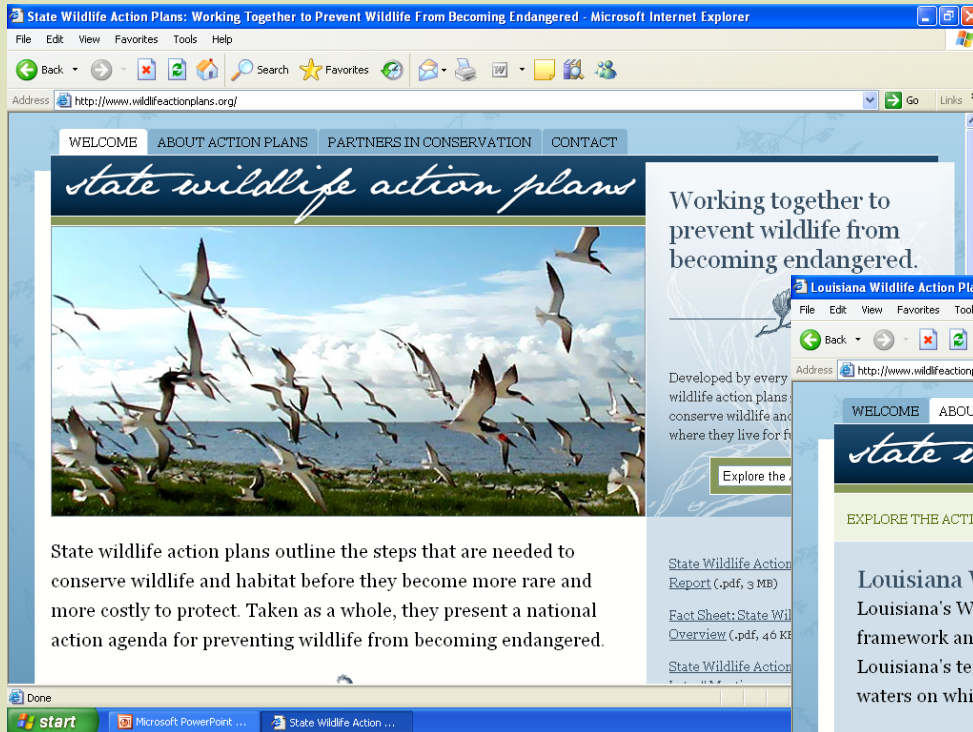
Strategy	Task
Identify and protect high priority habitat.	<ul style="list-style-type: none"> • Research best method of protection—acquisition, fee or easements from willing sellers • Identify power line rights-of-way to be managed to provide habitat for shrubland birds. (PIF); work with utilities to identify suitable areas/techniques • Maintain and enhance sufficient amount of high quality habitat to prevent and reverse population declines of shrubland passerines in Maine (MDIFW Shrubland Passerine Management System)
Maintain, manage and monitor priority	<ul style="list-style-type: none"> • Sustain habitat through collaborative management of areas that already are subjected to frequent

What Now?

- Funding
- Integration
- Partnerships



Find Out More



www.fishwildlife.org

www.teaming.com

www.wildlifeactionplans.org



ASSOCIATION *of*
FISH & WILDLIFE
AGENCIES



TEAMING WITH WILDLIFE
a natural investment