

Root River Floodplain

Root River Floodplain Workshop, May 29, 2014

Rich Biske





Outline

State Easement Programs

CREP II

Flood Recovery

Watershed Efforts

MRBI WREP

Current Watershed Habitat Protection

Not a complete history





Public Conservation Lands

- 2.75% of Watershed is Protected
- 1,030,150 acres privately owned
- ~34,000 acres public ownership
- ~4,500 acres of easement






Public Conservation Easements Efforts

Reinvest in Minnesota Easements (4,065
acres total easements)

Conservation Reserve Enhance Program
(RIM + CRP) (921 acres)



Wetland Restoration and Enhancement
Program (RIM + WRP) (80 acres)



CREP II

Conservation Reserve Enhancement Program

- 2004-2007
- Extensive Partnership Effort
- State-wide goal 120,000 acres
 - 7,345 acres enrolled

Southeast MN Goal 25,000 acres

2200 acres enrolled, 300 permanent






Flood Recovery RIM

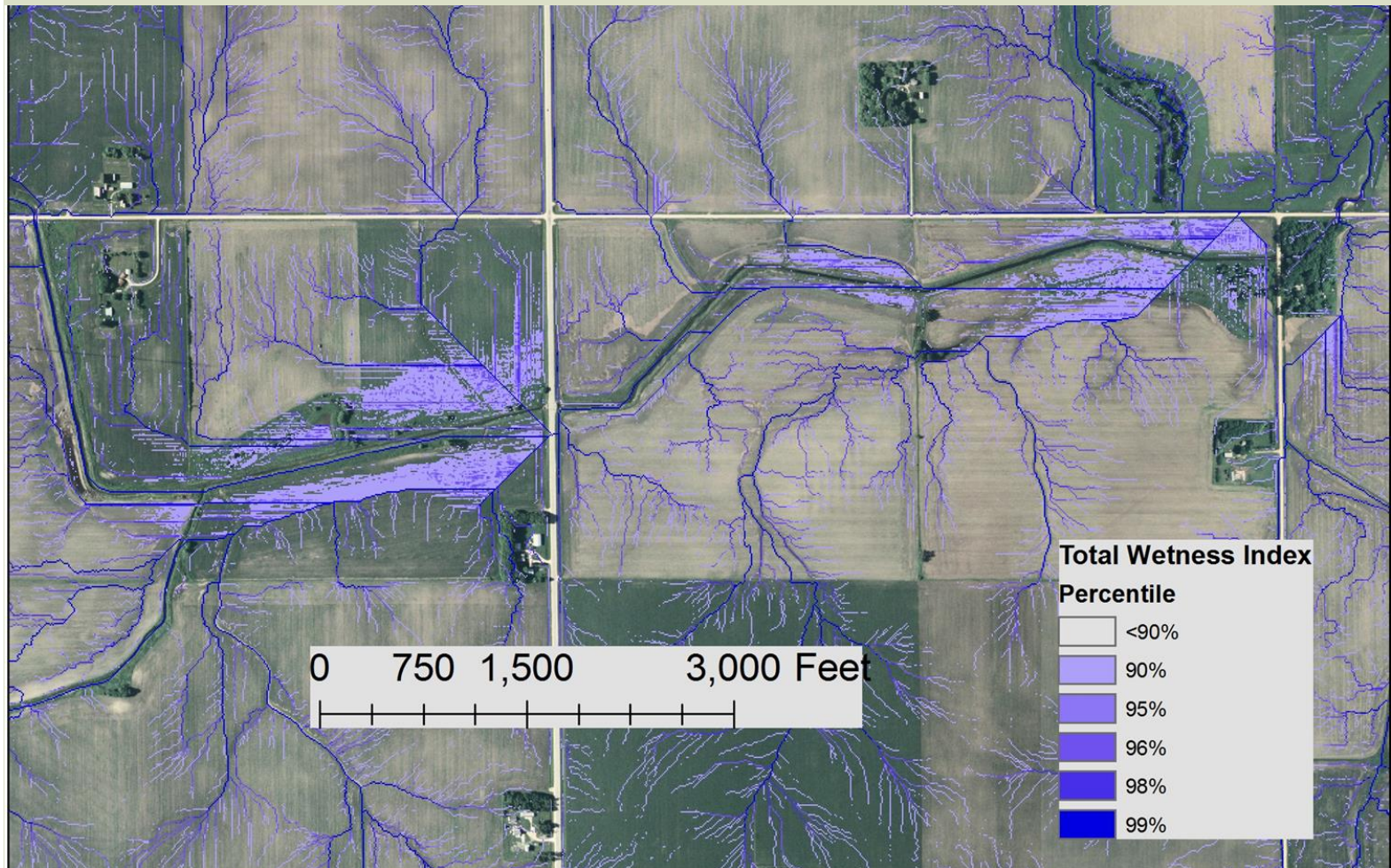
2007-2009+

1189 acres enrolled in Fillmore, Winona
and Houston Counties

\$3,560,400 cost




Headwaters Effort



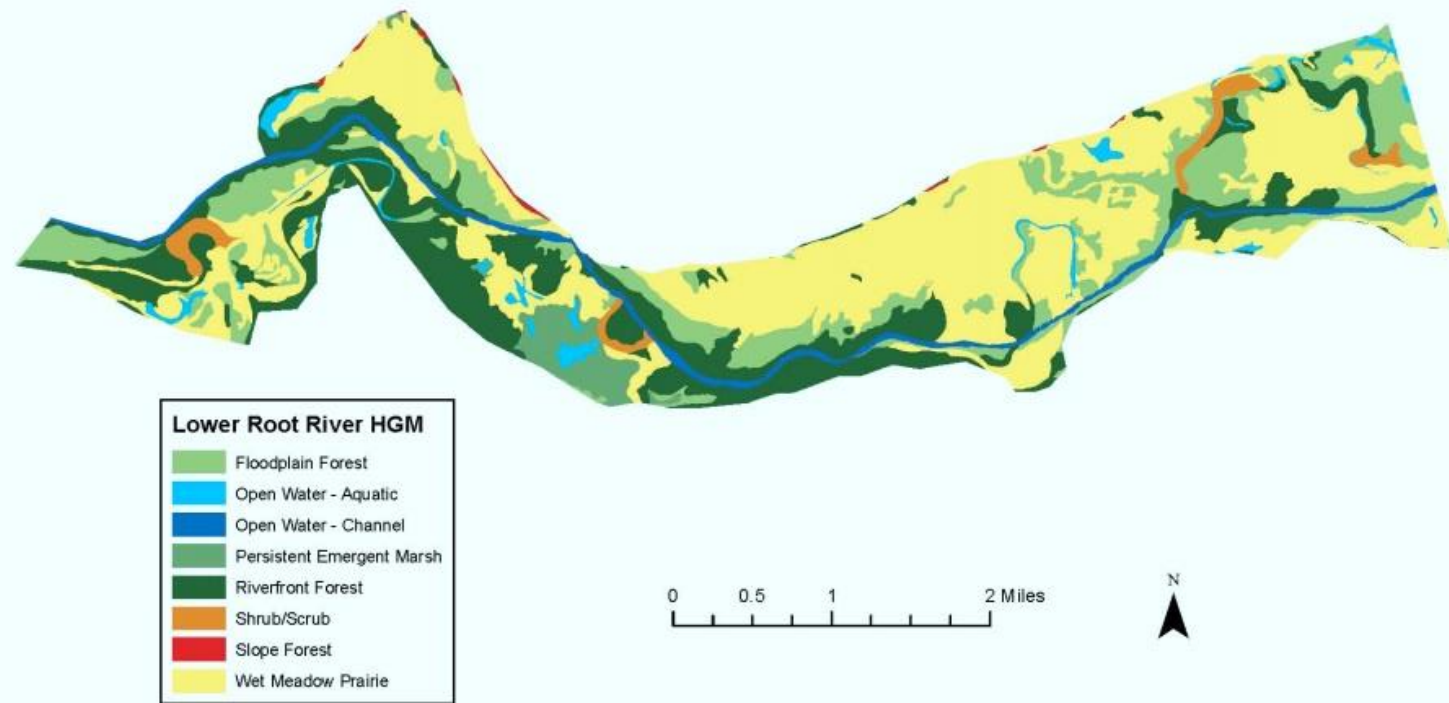


Hydro Geomorphic Model

Completed September 2011

- Determine the historical condition and ecological processes floodplain.
 - Identify contemporary changes to the physical condition, ecological processes, and biota from historical condition.
 - Identify options and approaches to restore and management specific communities and ecological processes
- 

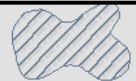
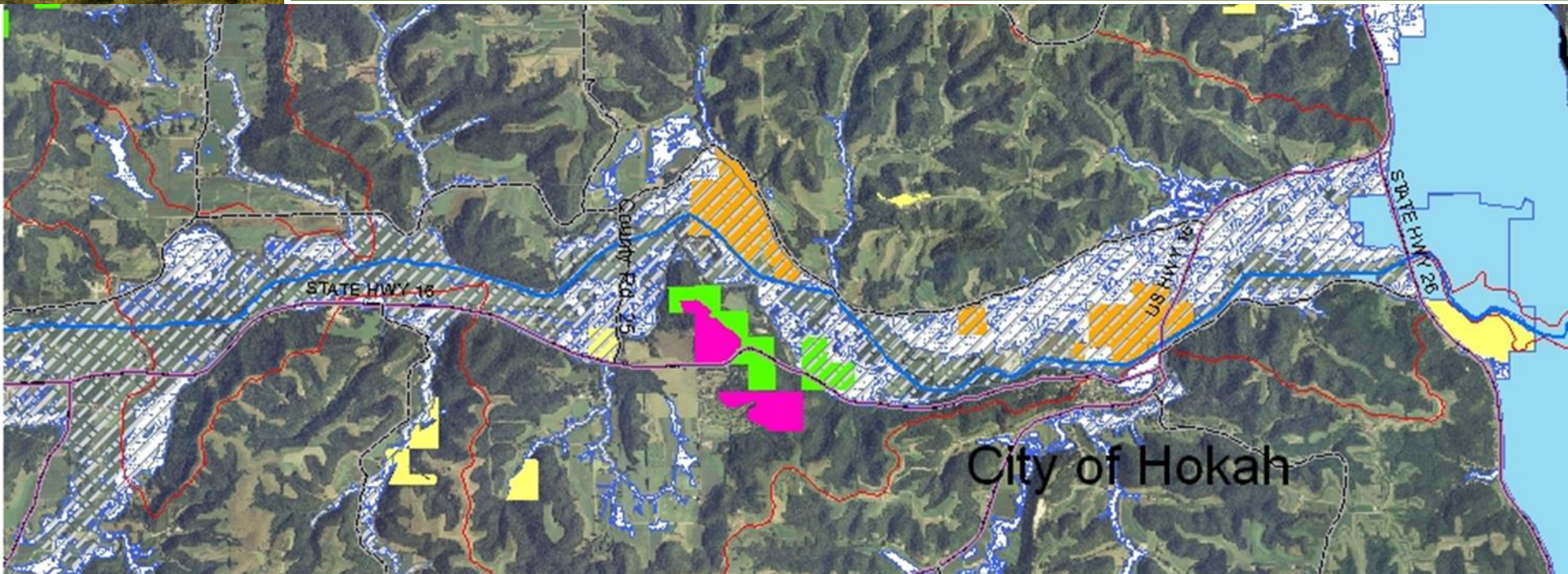
Restoration Guidance



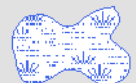
Blue Heron Conservation Design & Printing LLC

Figure 14. HGM map of the distribution of potential Presettlement vegetation communities in the Lower Root River region.

Lower Root WREP



Root River Floodplain



Hydric Soils



Upper Miss Refuge USFWS



Wildlife Management Areas



DNR Scientific & Natural Area



DNR Forestry Lands



RIM Easements



WREP Funding & Goals

Year	WREP Funds	Cash Match	Matching Source
2010	\$1,559,235	\$100,000	The Nature Conservancy
2011	\$2,447,185	\$805,315	BWSR RIM
2012	\$2,366,048	\$735,077	BWSR RIM
2013	\$2,366,048	\$735,077	BWSR RIM
4 yr total	\$8,738,516	\$2,375,469	

	Wetland Protection	Wetland Restoration	Wetland Enhancement
Acres	3000	1000	1636



Landowner Engagement

**Landowner Open Houses,
Informational Meetings**

Direct Mailings

One on One Visits

Phone Call Follow ups





Not a Good Time to Retire Land



ZCN04 - Corn (CBOT)





USFWS Root River Tract

664 acres east of Hwy 26 was acquired
by USFWS in 2009

Buildings and Structures have been
removed

Swamp White Oaks planted

Managed for shorebirds and waterfowl



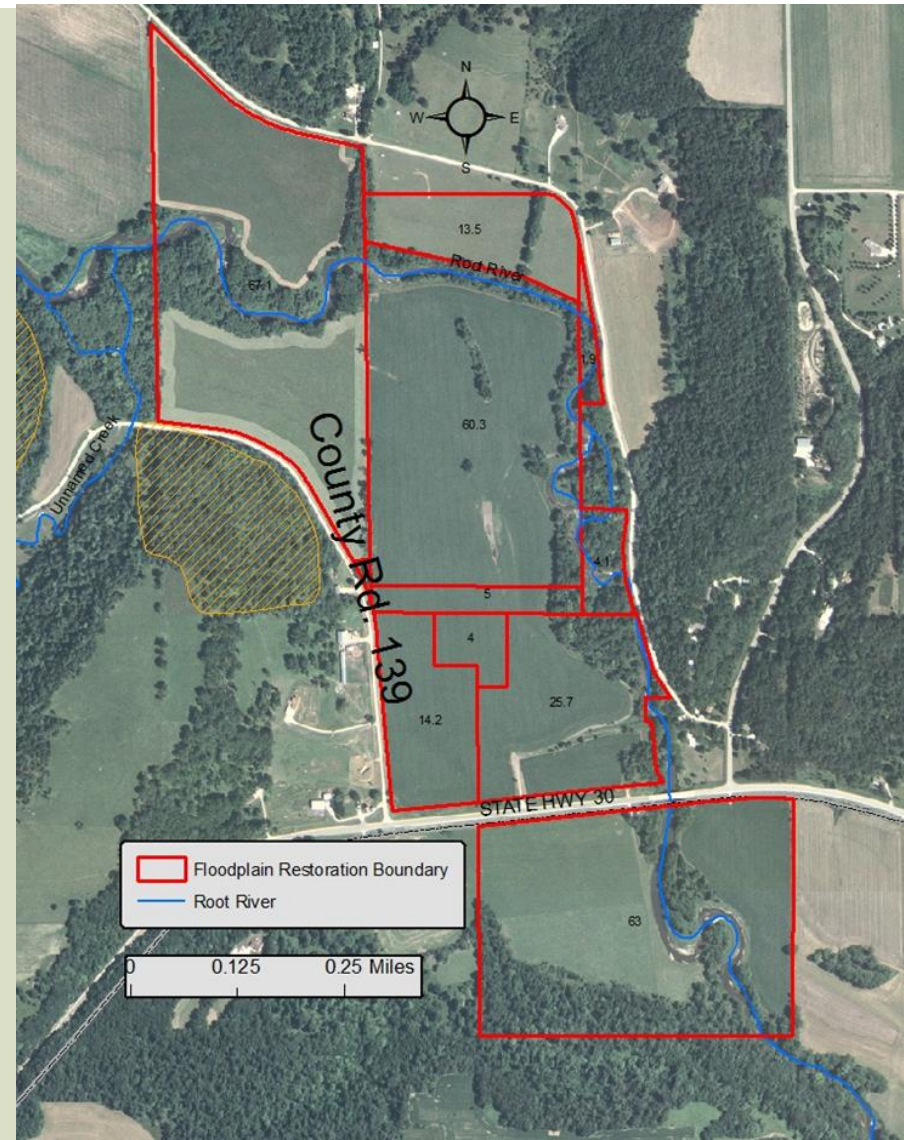


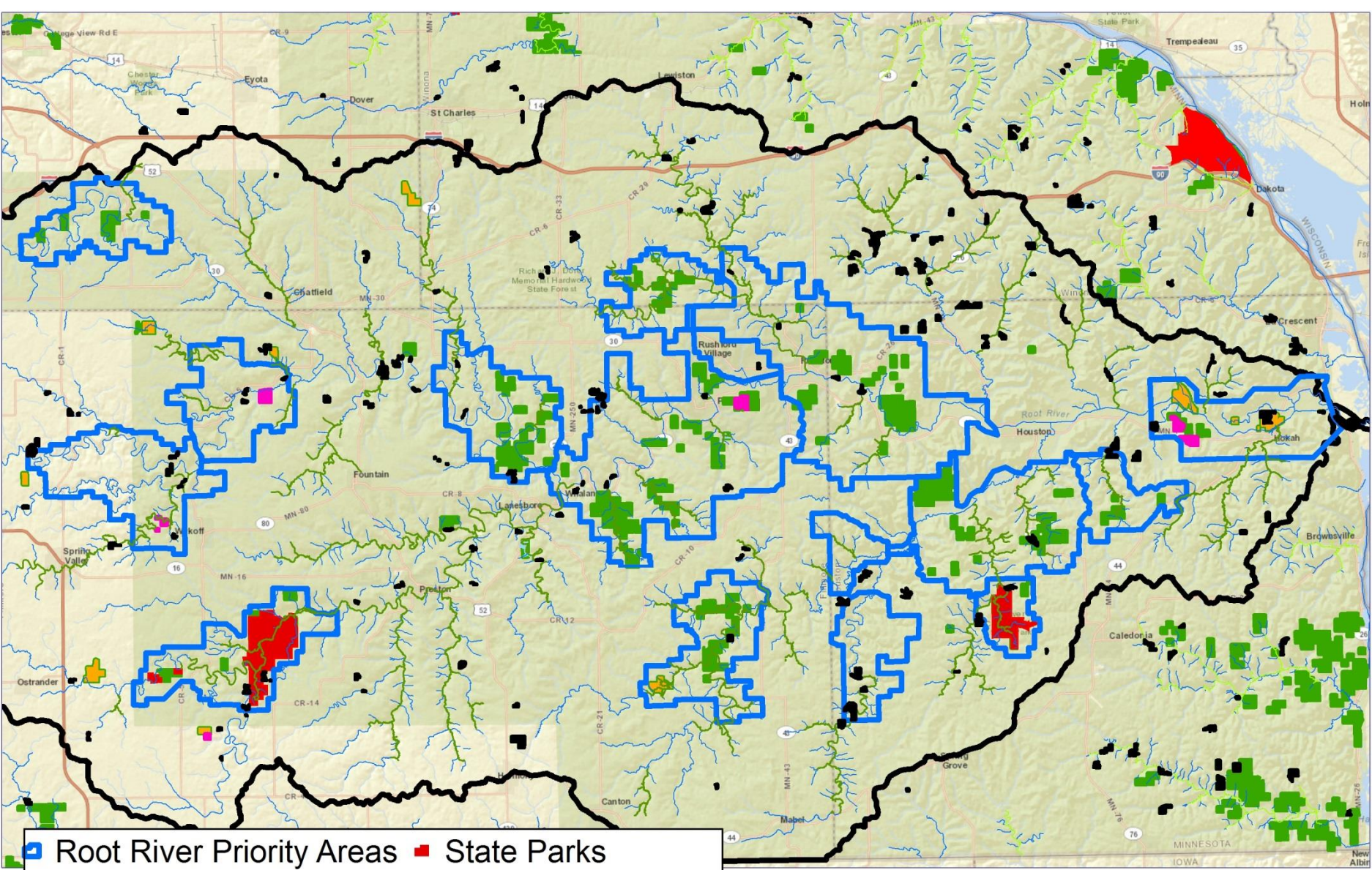
Need for Flexible Programs

Provides flood relief,
restores habitat and
reduces sediment and
nutrients downstream

Protects 1.7 miles of
trout stream

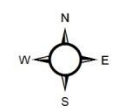
Need to Find
Compatible Uses –
Grazing Lands for
Conservation Purposes

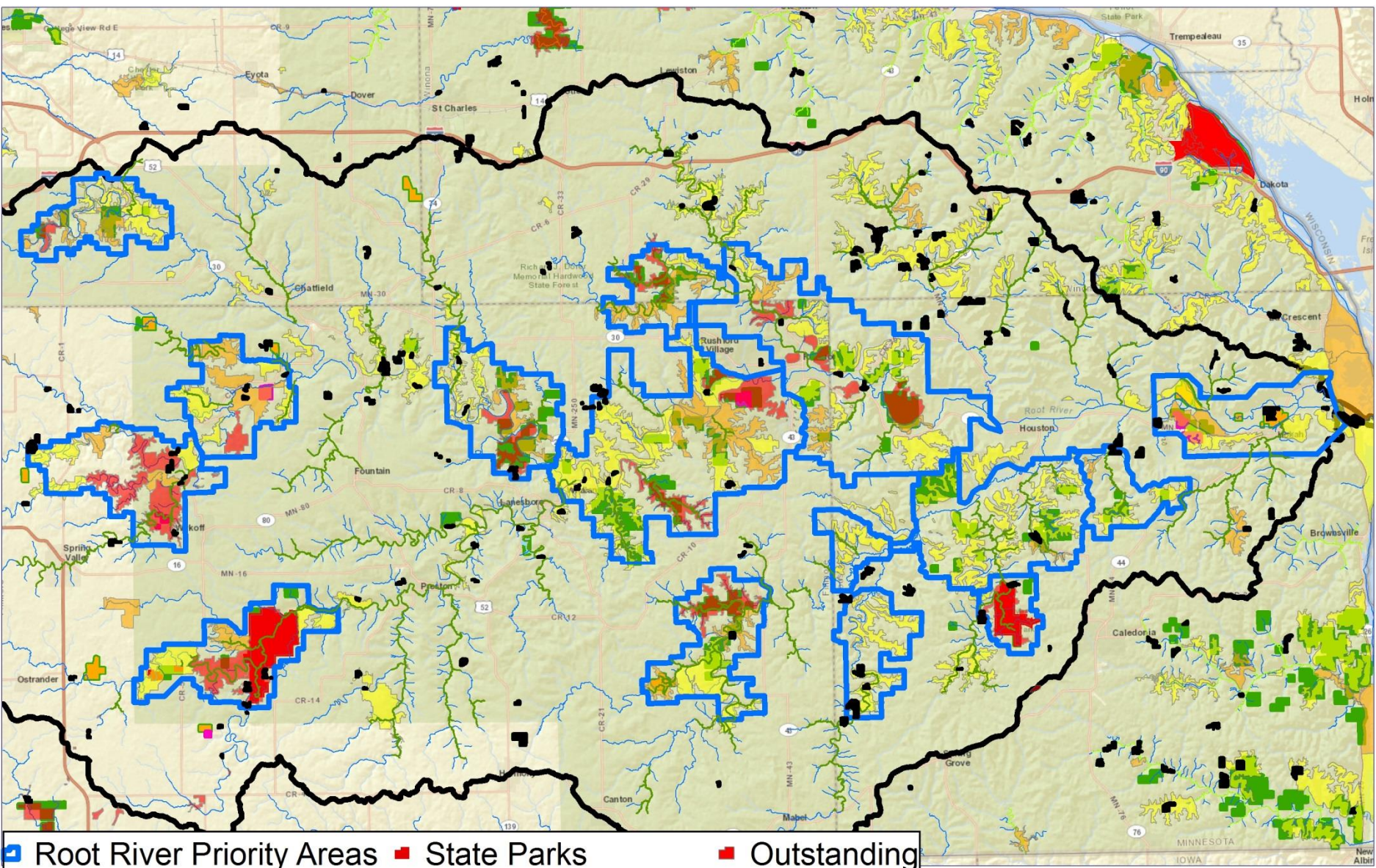




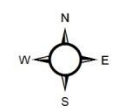
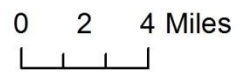
- Root River Priority Areas
- State Parks
- BWSR State Easements
- State Forest
- SNA
- Fisheries Easement
- WMA

0 2 4 Miles





- Root River Priority Areas
- State Parks
- Outstanding
- BWSR State Easements
- State Forest
- High
- SNA
- Fisheries Easement
- Moderate
- WMA



Summary

It's not easy retiring land

It doesn't have to be "retired"

**It requires a long-term effort and
complimentary programs and
policy, not conflicting.**



